

INCHEON TOURIST GUIDEBOOK

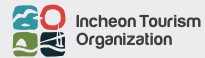
INCHEON

TRAVELING? COME TO INCHEON!

English



Incheon International Airport



Planning Incheon Tourism Organization **Publisher** Incheon Tourism Organization CEO **Issued** November 2023
Tel 032-899-7300 **Design & Print** WESTCO Co., Ltd **Incheon Tour Homepage** itour.incheon.go.kr **NAVER Blog** [discoverincheon](https://discoverincheon.naver.com)
f **@** **▶** **▶** Information on tourism in Incheon is also available on the Incheon Tour website itour.incheon.go.kr,
official NAVER Blog [discoverincheon](https://discoverincheon.naver.com), Facebook, Instagram, and YouTube channel.



Incheon Tour Homepage

all ways INCHEON

Let's Go On A Trip To Incheon Together!

The Open Port Area and Chinatown to experience modern history and culture

Wolmido, the popular date course with lots of delicacies and attractions

Songdo International City full of entertainment with colorful urban colors

Yeongjongdo Island, the very first destination in Incheon after getting off the plane

Ganghwado, a historical site where you can feel both prehistoric and modern history

168 Islands filled with nature's wonders.

Now, let's go on an exciting trip to Incheon!

BAENGYEONGDO

DAECHEONGDO

SOICHEONGDO

YEONPYEONGDO

YEONGHEUNGDO

JAWOLDO

SEONJAEDO

DEOKJEOKDO
GULUPDO

SEUNGBONGDO
DAEIJAKDO

GYODONGDO

GANGHWADO

SEOKMODO

JANGBONGDO

SIDO

MODO

SINDO

YEONGJONGDO

MUJIDO

SEO-GU

GYEYANG-GU

BUPYEONG-GU

DONG-GU

JUNG-GU

MICHUHOL-GU

NAMDONG-GU

YEONSU-GU

Part. 1 Tour by Area

4

Open Port Area	4
Chinatown	10
Wolmido	14
Songdo International City	18
Yeongjongdo	22
Gyeongin Ara Waterway	28
Travel to Northern-Southern Part of Ganghwado	32
Gyodongdo Island	38
Seokmodo Island	40
Old Downtown Area - Bupyeong-gu	42
Old Downtown Area - Namdong-gu	44
Old Downtown Area - Dong-gu-Michuhol-gu	46

Part. 2 Incheon Islands

48

Sindo-Sido-Modo Islands	50
Deokjeokdo Island	51
Daeijakdo Island	52
Seungbongdo Island	53
Baengnyeongdo Island	54
Daechongdo Island-Socheongdo Island	56
Yeonpyeongdo Island	58
Seonjaedo Island-Yeongheungdo Island	60

Part. 3 Railroad Trip

61

Incheon Line 1	62
Incheon Line 2	64
National Railway Line 1	65
Suin Bundang Line	66

Part. 4 Travel Information

68

Top 20 Wellness Tour Attractions in Incheon	68
Theme Travel	72
Incheon by Numbers	74
Incheon City Tour-Wolmi Sea Train	76
Travel Information	78



Time Travel To The Modern Times
Open Port Area

#Korean modern history #Arts #Culture #Vintage #Retro



With the opening of Jemulpo Port in 1883, the Modern Open Port Street was established in Incheon. The Open Port Area is now highly popular for its museums, exhibition halls, hotels, and unique cafes where you can feel its history.

How to get there

SUBWAY National Railway Line 1 Incheon Station Exit 1, Suin Bundang Line Incheon Station Exit 3

Recommended Course



Incheon Art Platform

This space, which used to be a warehouse at Incheon Port at the time of the opening of the port, was transformed into an art & cultural complex. Travelers will be captivated by architecture aged with time and the various work of artists.

- 📍 3, Jemullyang-ro 218beon-gil, Jung-gu
- ☎ 032-760-1000
- 🌐 www.inartplatform.kr



Travel Tip

Open Port Electric Car Tour

Let's look around various tourist sites on an eco-friendly electric car and tour guide. You can choose any one of three courses, and each course takes about 50 minutes.

- 📍 1st Floor, 63, Sinpo-ro 27beon-gil, Jung-gu
- ☎ 032-777-3773
- 🌐 jo-euntour.com



Incheon Open Port Museum

Incheon Branch of the former First Bank of Japan was reborn as Incheon Open Port Museum. In this museum, visitors can take a look at the artifacts that were introduced through or found in Incheon at the time of the port opening.

- 📍 89, Sinpo-ro 23beon-gil, Jung-gu
- ☎ 032-764-0488
- 🌐 ijcf.or.kr/load.asp?subPage=522.04



Incheon Open Port Modern Architecture Exhibition Center

In this center, you can look at the inside and outside of modern architecture of the open port era through an architectural model. It retains the history of over 100 years since the opening of the port in Incheon in 1883.

- 📍 77, Sinpo-ro 23beon-gil, Jung-gu
- ☎ 032-762-3089
- 🌐 ijcf.or.kr/load.asp?subPage=522.03





Daebul Hotel-Jung-gu Life History Exhibition

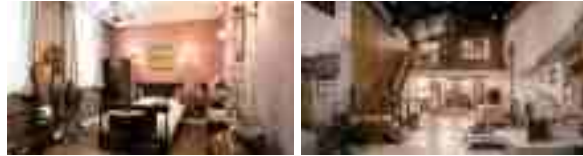
Daebul Hotel Exhibition displays the history of Daebul Hotel, the first Western-style hotel in Korea. Jung-gu Life History Museum replicates the lifestyle of everyday life in Incheon of the 1960s to 1970s. Two spaces are connected to each other just like one building.

Daebul Hotel Exhibition

📍 101, Sinpo-ro 23beon-gil, Jung-gu

Jung-gu Life History Exhibition

📍 97, Sinpo-ro 23beon-gil, Jung-gu ☎ 032-766-2202



Jemulpo Club (Gurakbu)

After the opening of the port, people from the United States, Germany, and Russia gathered at this club to share their social lives. There are various events held here every month.

📍 25, Jayugongwonnam-ro, Jung-gu ☎ 032-765-0261

🌐 jemulpoclub.org



Qing and Japanese Concession Area Boundary Stairs

Qing (Chinese culture) and Japanese culture face each other from across the street (left : China, right: Japan). You can see both Chinese architectures accentuated in red and Japanese-style wooden buildings at the same time.

What Is a Concession?

This is the zone where foreign residents were permitted to stay and were granted extraterritorial rights in the open port area.



Hongyemun



Built in 1908 by the Japanese Army's engineering battalion for delivering supplies, Hongyemun is a stone gate resembling a rainbow connecting Incheon Port and Jeon-dong, Jung-gu.

📍 8, Songhak-dong 3-ga, Jung-gu



Jayu Park

Jayu Park was the first Western-style park in Korea and was called Manguk Park at the time. You can view Incheon Port and Incheon Sea from here, and it is also popular for beautiful cherry blossoms in the spring.

📍 46, Jemullyang-ro 232beon-gil, Jung-gu



Travel Tip

Vintage Stores

There are old buildings established 130 years ago in the alleys around the Open Port Area. Many buildings have been modernized over time, but some cafes and restaurants still keep their old classical atmosphere.



- ① Brown Hands
- ② Ilkwang Light House
- ③ Open Port Whole Chicken

Dapdong Cathedral of St. Paul

Built in the 1890s, Dapdong Cathedral of St. Paul is one of the oldest Western-style modern architectures among all Korean Catholic churches. Its sharp domes on the upper part of the main tower and the upper part of the small tower complete a beautiful facade.

📍 2, Uhyeon-ro 50beon-gil, Jung-gu
 ☎ 032-762-7613
 🌐 www.dapdong.or.kr



Noodle Platform

Noodle Platform is Korea's first noodle themed-culture complex. You can enjoy a variety of contents related to noodles in exhibits and videos, and taste noodles from different countries and regions.

📍 36, Sinpo-ro 27beon-gil, Jung-gu
 ☎ 032-766-3770



Incheon Citizen Love House

The former private residence of the Incheon mayor for many years, Incheon Citizen Love House had served as a history archive center since 2001. In July 2021, it was reborn as a space open to the public to commemorate the 40th anniversary of Incheon Independence. This is a space for culture and history, where you can experience various contents and events.

📍 74, Sinpo-ro 39beon-gil, Jung-gu ☎ 032-765-0261
 🌐 www.인천시민애집.kr



Tips to enjoy.
100 Times More

Open Port Area

• Korean-style Sinpo Sweet and Sour Chicken •

You can taste Sinpo Sweet and Sour Chicken at Sinpo International Market near the Open Port Area. This menu is popular among both residents and foreign tourists thanks to its sweet & spicy sauce and chewy texture.



• Activities in the Open Port Area •

The Open Port Area offers a variety of things to enjoy, such as Hanji craftwork to make everyday goods, dressing up in costumes from the time of enlightenment, and a black and white photo studio.

• Nights in the Open Port Area •



There are special cultural events held in the Open Port Area every year. You can enjoy a romantic atmosphere with diverse cultural performances and experiential activities.

• Incheon Easy •

With Incheon Easy, an application for smart traveling in Incheon, you can search travel information and use smart convenient services.

Learn about upgraded Incheon Easy

Travel recommendation by AI Get recommendations for the best travel course to suit your tastes.

Stamp tour Record your trip to Incheon by collecting stamps.

Audio guide Enjoy travelling with stories using the audio guide.

AR/VR time travel Enjoy a realistic tour with VR experiences.

Smart coupon Download mobile coupons and take advantage of various benefits.

Easy marketplace Look around tickets, experiences, and tour products all at one place.

Map, Navigation Easily find your destination and see nearby tourist attractions.

Parking information Check the parking information in advance without having to hassle.

Scan the QR code and download the Incheon Easy application below.

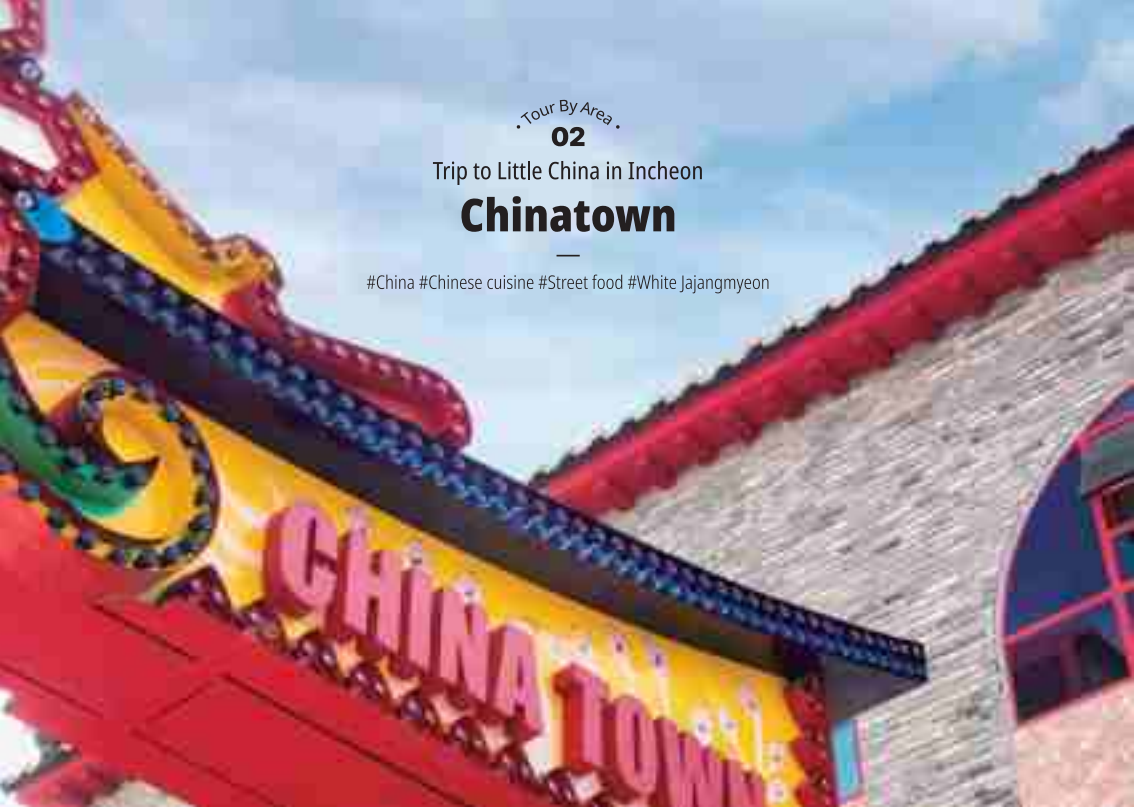
GET IT ON Google Play | Download on the App Store



Trip to Little China in Incheon

Chinatown

#China #Chinese cuisine #Street food #White Jajangmyeon



With the opening of Incheon Port, the Qing Dynasty Concession Area was established in Chinatown. The streets are filled with colorful buildings in Chinese style, harmonizing red and gold colors. You can also enjoy tasting Korean-style Chinese cuisine and various street foods.

How to get there

SUBWAY National Railway Line 1 Incheon Station Exit 1, Suin Bundang Line Incheon Station Exit 3

Recommended Course



Pai-lou

Opposite to Incheon Station, a huge traditional Chinese gate welcomes visitors. When you encounter the delicate sculptures and brilliant red colors, you will be taking a photo of it before you know. Pai-lou is an iconic symbol of Chinatown and there are four pai-lous (Junghwamun, Inhwamun, Seollinmun, and Hanjungmun Gates).



Zoom in

Statue of Guan Yu

At the entrance of Hanjungmun Gate, you can see the Statue of Guan Yu riding a horse. There is a belief that Guan Yu is the God of Wealth, so touching his hands three times can bring wealth.

Chinatown-ro 51beon-gil, Jung-gu area
(Three Kingdoms Mural Street)

Korean-Chinese Cultural Center (Incheon Overseas Chinese History Hall)

Here you can experience both Korean and Chinese culture. On the 1st floor, permanent exhibition hall displays art and culture, and on the 2nd floor, you can find miniatures of Chinese landmark architectures. The Incheon Overseas Chinese History Hall, which is an annex, shows the genuine life of Chinese settlers who settled in Incheon.

238, Jemullyang-ro, Jung-gu
 032-764-9771
 ijcf.or.kr/load.asp?subPage=522.01



Travel Tip

Songwol-dong Donghwa Village (Trickart Story)

In the Songwol-dong Donghwa Village near Chinatown, you can have fun looking around a variety of sculptures as well as murals. At Trickart Story in Songwol-dong Donghwa Village, you can take interesting photos with dimensional Trickart.

Songwol-dong Donghwa Village

17-1, Sonwol-dong 3(sam)-ga, Jung-gu 032-764-7494

Trickart Story

42, Donghwamaeul-gil, Jung-gu 032-761-2631



Jajangmyeon Museum

Jajangmyeon was first made in Incheon. With this as a motif, the theme museum features everything about jajangmyeon. As this building was established by remodeling the old Gonghwachun Restaurant (Modern Architecture Cultural Heritage), the birthplace of jajangmyeon, you can look around the restaurant of the old days with exhibits.

📍 56-14, Chinatown-ro, Jung-gu ☎ 032-773-9812
 🌐 ijcf.or.kr/load.asp?subPage=522.05



Euseondang Shrine

This is the only Chinese-style shrine in Korea. It opened under the name of Hwaeomsa Temple in the 1850s before the opening of Incheon Port. You can check out the lifestyle, culture, and religion of overseas Chinese after the opening of the port.

📍 34, Chinatown-ro, Jung-gu ☎ 032-772-2129



Three Kingdoms Mural Street-Chohanji Mural Street

Located on the left side of Qing and Japanese Concession Area Boundary Stairs, Three Kingdoms Mural Street is a 150-meter-long street featuring 77 stories from the Three Kingdoms. Chohanji Mural Street features 56 hero stories about Xiang Yu, Liu Bang, Han Xin, and many others.

Three Kingdoms Mural Street 📍 Chinatown-ro 51beon-gil, Jung-gu area
Chohanji Mural Street 📍 4-1, Bukseong-dong 3 (sam)-ga, Jung-gu



Incheon Overseas Chinese History and Culture Hall

This historical and cultural space opened in 2021 by renovating the building which used to be the Chinese Hall in 1905. It holds exhibitions with the theme related to the Incheon overseas Chinese' society, migration, settlement, and economy and education.

📍 21, Chinatown-ro 55beon-gil, Jung-gu ☎ 032-772-4073



Tips to enjoy.
100 Times More

Chinatown

• Street Foods •

You will find Chinese street foods throughout Chinatown such as bread without stuffing Ganggalbbang, sweet red bean bread Hongdubyeong, and coated fruits with sugar Tanghulu and more.



• Chinese Cuisine •

Chinatown is famous for Chinese cuisine. Although each Chinese restaurant has different tasting Jajangmyeon, Jjamppong, and Tangsuyuk, wherever you go, you will find them to be better than you expected.

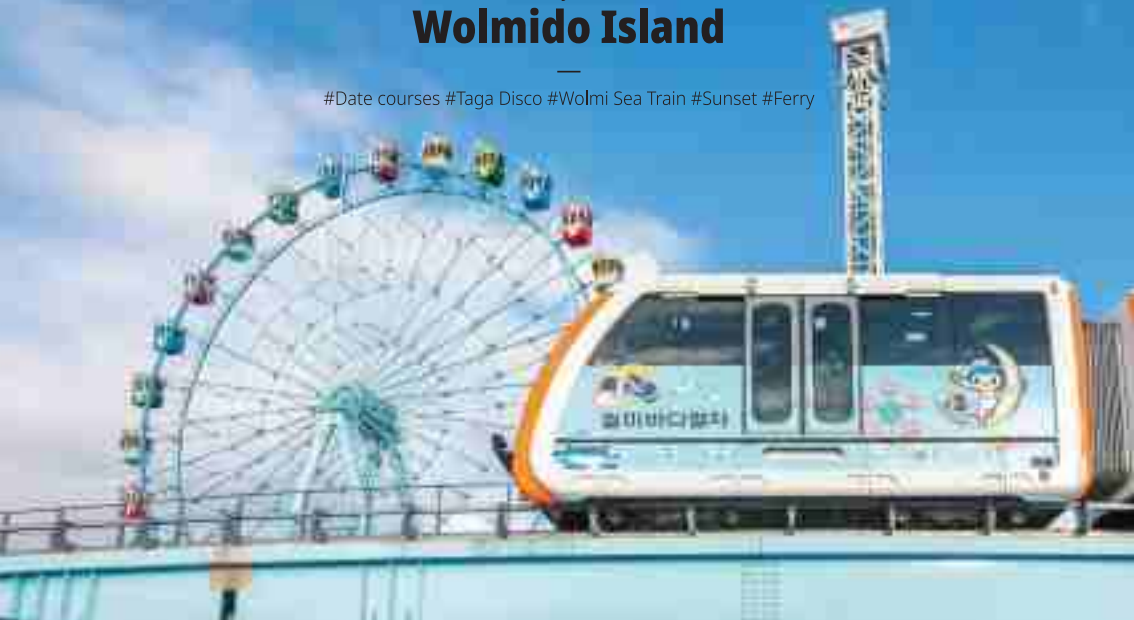


There is White Jajangmyeon in Incheon?

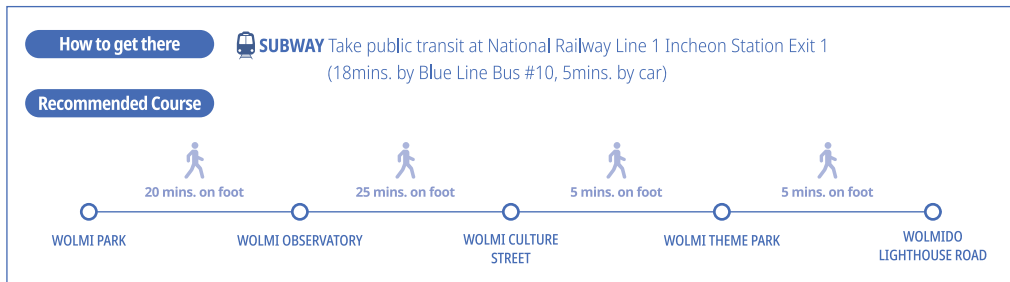
You are making a mistake if you think that all jajangmyeon is black. White Jajangmyeon is made with traditional Tianmianjiang (sweet bean sauce) without MSGs or color additives.

The Sea of Joyful Memories Wolmido Island

#Date courses #Taga Disco #Wolmi Sea Train #Sunset #Ferry



When stepping on Wolmido Island, you will feel a moment of serenity. Relax while looking at the vast expanse of the sea and enjoy a peaceful walk along the waterfront. Wolmido Island is a popular tourist destination in Incheon, where culture and entertainment harmonize together.



Wolmi Culture Street- Wolmi Theme Park

Wolmi Culture Street is one of Incheon's most popular tourist attractions where you can enjoy the sea, the setting sun, theme park, cruise, and musical fountain. You can enjoy various rides including the Viking Ship and Taga Disco at Wolmi Theme Park.

- 36, Wolmimunhwa-ro, Jung-gu (Wolmi Culture Street)
- 032-764-0842 (Wolmido Promotion Association)



Wolmi Park (Korean Traditional Garden-Wolmi Cultural Center)

Built around Wolmisan Mountain, Wolmi Park is a perfect place for family picnics or dates. In the Wolmi Korean Traditional Garden within the park, you can find a beautiful garden reproduced in the traditional style of the Joseon Dynasty, while also enjoying a variety of traditional culture experiences including Hanbok and traditional games at the Wolmi Cultural Center.

- 131-22, Wolmi-ro, Jung-gu
- 032-765-4133(Wolmi Park Information Center)



Mulbeom (Seal) Car

This is an eco-friendly electric car running from Wolmi Park to the peak of Wolmisan Mountain. You can go up to the peak by Mulbeom Car, enjoying the view outside the window.

Wolmido Lighthouse Road

While walking towards the lighthouse, you can learn about the history of Jung-gu. You can also view the fascinating scenes on the West Sea, the beautiful sunset and a nightscape tinged with the glow of the evening.

- 120, Bukseong-dong I(il)-ga, Jung-gu



Incheon Fish Market-Yeonan Pier

You can try fresh seafood at Incheon Fish Market, the largest fish market in Incheon. Walk along the sea breeze at Yeonan Pier. Your fatigue from the trip will be relieved while relaxing at the Saint Petersburg Square.

Incheon Fish Market

📍 37, Yeonanbudo-ro 33beon-gil, Jung-gu
☎ 032-888-4241
🌐 www.asijang.com

Saint Petersburg Square

📍 36, Yeonanbudo-ro, Jung-gu



The Museum of Korea Emigration History

As Korea's first immigration history museum, it was opened in Wolmi Park in 2008. The museum has three floors and one basement level, consisting of permanent exhibition room where displays the relics of the time, a special exhibition room, and a storage room.

📍 329, Wolmi-ro, Jung-gu ☎ 032-440-4710
🌐 www.incheon.go.kr/museum/MU040101



Travel Tip

Wolmido Cruise & Car Ferry

Wolmido Cruise returns to Jeongseojin via Yeongjongdo and Molchido Islands (Jakyakdo Island). You can get on a car ferry shuttling between Wolmido and Yeongjongdo Islands (Gueupbaetteo Quay) at Wolmido Quay.

📍 36, Wolmimunhwa-ro, Jung-gu (Wolmido Quay)



Wolmi Observatory

From the Wolmi Observatory on top of Wolmisan Mountain, enjoy a panoramic view of the West Sea and Incheon Inner Port. Even Incheon Bridge is visible on a clear day.

📍 125, Bulseong-dong 1(il)-ga, Jung-gu
☎ 032-765-0727



Tips to enjoy.
100 Times More

Wolmido Island

• Incheon Port Coastal Ferry Terminal •

Starting Point for Trip to Incheon Islands

At the Incheon Port Coastal Ferry Terminal located on Yeonan Pier, you can board a passenger ship bound for the islands in the West Sea, including Palmido Island and Baengnyeongdo Island. Make sure to carry an ID card as it is required for boarding ships.

📍 70, Yeonanbudo-ro, Jung-gu ☎ 1599-5985

• Rides •

Thrilling Rides

There are must-try rides in Wolmido island, Viking Ship and Taga Disco. Funny and exciting DJs give you a great laugh.

📍 81, Wolmi Munhwa-ro, Jung-gu ☎ 032-761-0997



• Sunset •

Sunset View from Wolmi Sea Train

The train travels 6.1 km around Wolmido Island on a coastal track, offering a full view of Wolmido Island and Incheon Inner Port. You can get on a train at Wolmi Sea Station.

📍 269, Jemullyang-ro, Jung-gu (Wolmi Sea Station)
☎ 032-450-7610 (Incheon Transit Corporation Wolmi Operation Team)



• Silo Mural •

World's Largest Mural on Silos

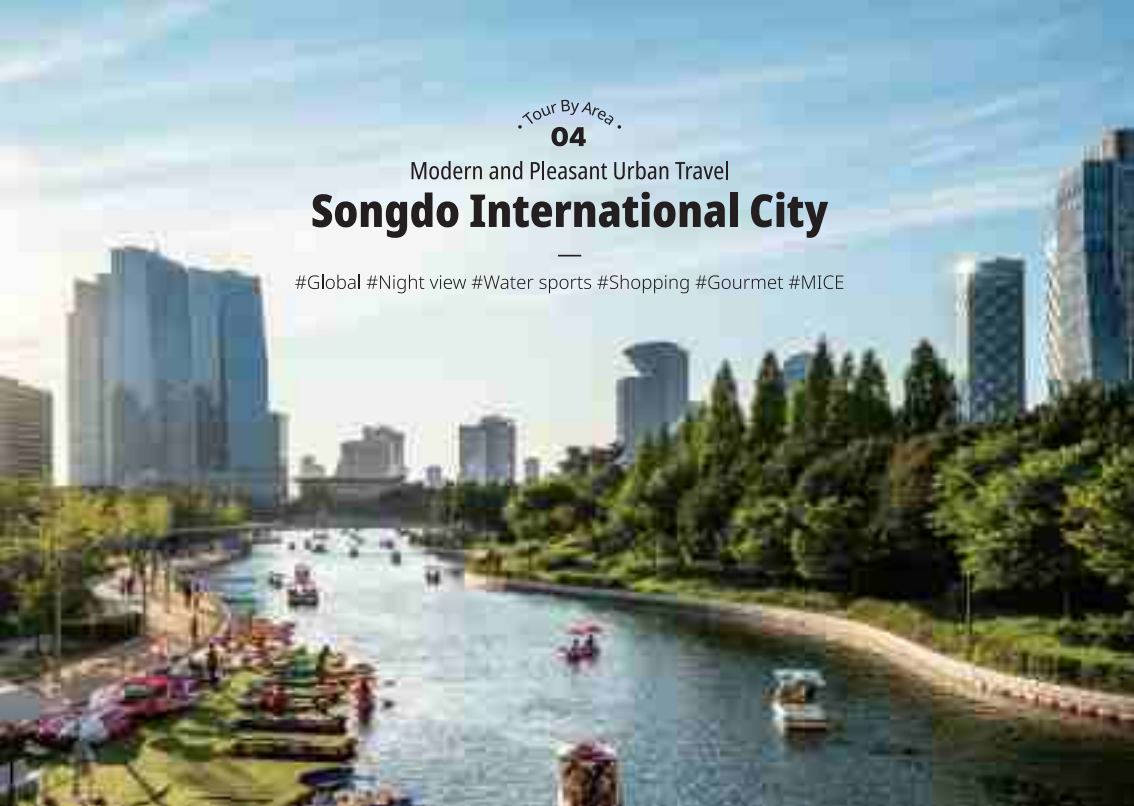
The Silo (grain-storing warehouse) Mural consists of a total of 16 silos as tall as 22-story buildings. It was registered as the world's largest outdoor mural in the Guinness World Records. At night, you can see the sparkling lights of the media façade covered in Incheon Inner Port.

📍 Bukseong-dong 1 (il)-ga, Jung-gu

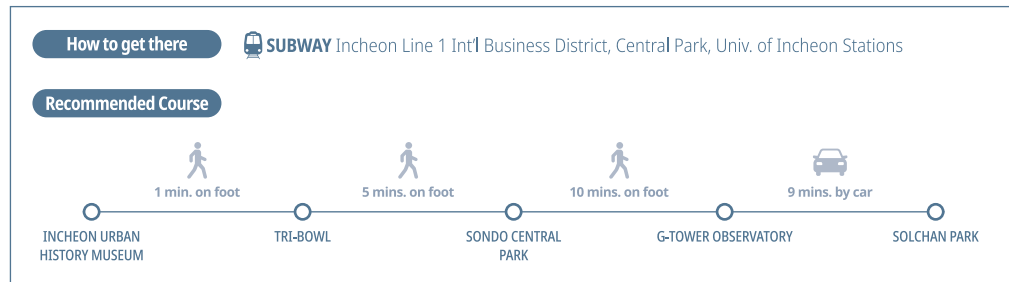


Modern and Pleasant Urban Travel Songdo International City

#Global #Night view #Water sports #Shopping #Gourmet #MICE



Songdo International City is not just a tourist destination. As the center of the Incheon Free Economic Zone, it is a world-class city with 15 international organizations. As such, the cityscape is modern and beautiful. The eye-catching architecture creates a sophisticated urban atmosphere, while the smartly designed green spaces and parks give the city some fresh color.



Tri-bowl

This structure takes the form of three bowls (containers) based on the theme of spiral spatial beauty. You can enjoy culture and arts in the amphitheater-shaped theater and multipurpose cultural space. It is also popular as a nightscape photo spot of Songdo with the twinkle of building lights at night.

250, Incheontower-daero, Yeonsu-gu
 032-832-7996 www.tribowl.kr



G-Tower Observatory (IFEZ PR Center)

On the 33rd floor of G-Tower, there is an observation deck where you can have a panoramic view of Songdo International City and IFEZ PR Center, a place to learn the history of IFEZ.

175, Artcenter-daero, Yeonsu-gu 032-453-7883-4
 www.ifez.go.kr

Incheon Urban History Museum

If you are wondering about the changes and development process of Incheon, visit the Incheon Urban History Museum. You can learn about Incheon's history from the open port city to the established city with a population of 3 million today.

238, Incheontower-daero, Yeonsu-gu 032-850-6000
 www.incheon.go.kr/museum/MU050101



Songdo Central Park

As a seawater park, Songdo Central Park is Songdo's representative tourist attraction, where you can enjoy a walk, water sports, and cycling. At night, illuminating lights create a fantastic nightscape on the water.

160, Convensia-daero, Yeonsu-gu



Travel Tip

Shopping Tour (Hyundai Premium Outlet, Triple Street)

One of the greatest pleasures of traveling to Songdo International City is shopping. Hyundai Premium Outlet and Triple Street are especially popular shopping destinations.

Hyundai Premium Outlet Songdo Branch

123, Songdogukje-daero, Yeonsu-gu
 032-727-2233
 www.ehyundai.com/outlet/b00174000

Triple Street

33-1, Songdogwahak-ro 16beon-gil, Yeonsu-gu
 032-310-9400
 www.triplestreet.co.kr

Solchan Park



In this long coastal park along the sea, you can enjoy a walk on the deck or appreciate the sunset. The cafe in the park doubles as a dining pub and museum where you can take a moment to relax from everyday life.

📍 20, Convensia-daero 391beon-gil, Yeonsu-gu

Songdo Convensia

Songdo Convensia is located at the center of Songdo International City, which was selected as Korea's first international conference complex district. The pointed roof was designed based on the theme of Taebaeksan Mountain.

📍 123, Central-ro, Yeonsu-gu
 ☎ 032-210-1114
 🌐 songdoconvensia.visitincheon.or.kr



Travel Tip



Gourmet Tour(Songdo Hanok Village)

Designed in the traditional Korean residential architecture style, Songdo Hanok Village offers tourists diverse delicacies ranging from everyone's favorite charcoal grilled ribs, Bulgogi, Chinese cuisine, seafood, and even cafés.

Songdo Hanok Village

📍 180, Techno park-ro, Yeonsu-gu

Art Center Incheon

Art Center Incheon has been recognized as a global cultural space, offering performances with a wide sea view. World-class sound facilities are immensely popular.

📍 222, Artcenter-daero, Yeonsu-gu
 ☎ 032-453-7700
 🌐 www.aci.or.kr



Tips to enjoy
100 Times More

Songdo International City



• Songdo Moonlight Festival Park •

Songdo Moonlight Festival Park is the venue for Incheon's representative festival, Pentaport Rock Festival, as well as for camping. At one side of the park, there is the Songdo Dog Park for visitors with pets.

📍 350, Central-ro, Yeonsu-gu

• Incheon Songdo International Campsite •

Located on the Songdo Coast, Incheon Songdo International Campsite is a luxury camping site equipped with campsite, caravans, and glamping sites. You can enjoy the seascape from all sites.

📍 60, Jisikgiban-ro, Yeonsu-gu
 ☎ 032-456-2650
 🌐 forest.maketicket.co.kr/ticket/GD102



• Nightscape •

Nights in Songdo International City Are Even More Beautiful than the Daytime.

With the moon, stars, and man-made lights, the night in Songdo international City shines more beautifully than the daytime. You can encounter the beautiful lights from the buildings while strolling along the park.



+ Nightscape viewpoints

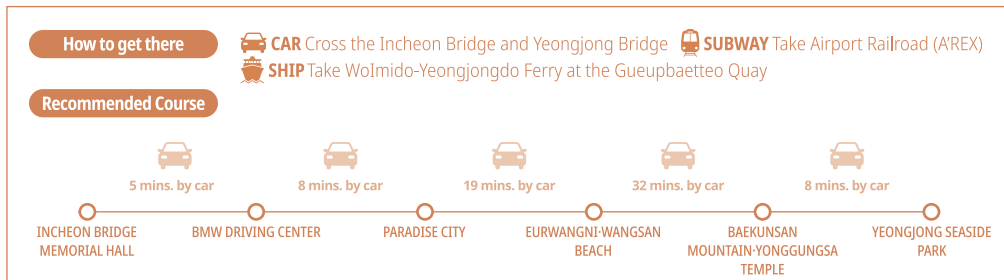
Songdo Central Park (Night water taxi, Moon boat), Panoramic 65, Ocean Scope, Solchan Park

Tour By Area
05
Travel to the Sky
Yeongjongdo Island

#Incheon International Airport #Beach #Entertainment #Camping #Resort complex



Yeongjongdo Island, where Incheon International Airport is located, is the face of Korea. While hoping to make a leap into becoming a hub city of Northeast Asia, the island has its own relaxed green colors. You can take time to smell the roses while island trekking, driving along the beach, and enjoying the sunset at the port.



Incheon Bridge Memorial

During your trip to Yeongjongdo, make sure to visit Incheon Bridge Memorial where you can find everything from the history of Incheon Bridge to the cutting-edge construction methods used for the bridge. From the observatory, you can view Songdo International City and Incheon Bridge.

📍 3, Incheondaegyo Highway, Jung-gu
☎ 032-745-8123 🌐 www.incheonbridge.com



Paradise City

The resort complex Paradise City offers hotel, swimming pool, spa, club, shopping arcade, casino, and theme park. You can have a relaxing vacation while experiencing culture, entertainment, and shopping on special days.

📍 186, Yeongjonghaeannam-ro 321beon-gil, Jung-gu
☎ 1833-8855 🌐 www.p-city.com



BMW Driving Center

You can join driving experience programs for each course or experience an exciting race sitting in the passenger side of a professional driver. There are many other facilities including eco-friendly park and a terrace.

📍 136, Gonghangdong-ro, Jung-gu
☎ 080-700-8000
🌐 www.bmw-driving-center.co.kr



Inspire Complex Resort

Inspire Complex Resort is a mega complex resort filled with a variety of facilities and contents. There are many things to enjoy, including a hotel, arena, glass-domed water park, outdoor park, shopping mall, and casino.

📍 700, Yongyu-ro, Jung-gu ☎ 032-580-9000
🌐 inspirekorea.com



Eurwangni-Wangsan Beach

If you are planning for a perfect day, walk on the tidal mudflat or sandy beaches at low tide, enjoy a tasty meal at the restaurant near beach, and watch the sunset. Wangsan Beach is also a popular camping spot.



📍 Eurwang-dong, Jung-gu (Eurwangni-Wangsan Beach)

🔍 Zoom in

Masianhaebyeon Beach

Masianhaebyeon Beach

📍 18, Masiran-ro, Jung-gu

Seonnyeobawi Rock Beach

📍 60, Seonnyeobawi-ro, Jung-gu

👉 Travel Tip

Enjoy fresh Yeongjongdo food

In Yeongjongdo, you can find a variety of foods from seafood noodle soup to grilled clams where you can have fun choosing among many different kinds of clams.

+ Grilled Clam

There are many restaurants around Yeongjongdo Beach, where you can enjoy grilled clams with an ocean view.



+ Seafood Noodle Soup

You can enjoy chewy noodles in a broth made with various kinds of seafood.



Haneul Garden

This is a famous photo spot for its scenic backdrop. In the spring, rape flowers and forsythia appear in full bloom, while in the autumn, cosmos, silver grass, and pink mule decorate the garden. Please note that taking photos or videos in the direction of the airport runway is prohibited.

📍 2848-6, Unseo-dong, Jung-gu



Yeongjong Seaside Park

At Yeongjong Seaside Park, you can enjoy rail bikes with sea views or camp in a tent or a caravan. In the summer, a water park and sea water foot bath sites open.

📍 75, Gueup-ro, Jung-gu area

☎ 032-719-7778

🌐 www.영종씨사이드레일바이크.com



👉 Travel Tip

Best Photos from Yeongjongdo Cafes

Visitors can enjoy aromatic coffee and various bakery goods while looking out onto the sea. There are modern and refined cafes on the Eungol Cafe Street.

+ Cafes along Yongyudo Beach

📍 118, Masiran-ro, Jung-gu area

+ Eungol Cafe Street on Yeongjongdo Island

📍 3 Haennaeroan-gil, Jung-gu area



Baegunsan Mountain·Yonggungsa Temple

Baegunsan Mountain in the center of Yeongjongdo Island, which is a perfect trekking course with a gentle slope. Yonggungsa Temple, located halfway up the mountain, was established by Great Master Wonhyo about 1,000 years ago, and you can find the tablet handwritten by Heungseon Daewongun in the temple.

📍 199-1, Unnam-ro, Jung-gu (Yonggungsa Temple) ☎ 032-746-1361



Gueupbaetteo Quay

This is a perfect place to enjoy a relaxing walk along the path looking at the sea. You can taste fresh seafood at the nearby fish market, and there are also reasonably priced restaurants and pretty cafes everywhere you go.

📍 1948-3, Jungsan-dong, Jung-gu



Tips to enjoy
100 Times More

Yeongjong International City

• Geojampo Port •



This is a popular place to visit at the end and beginning of the year, where you can see both the sunset and sunrise over the sea. The scenery of the glowing sunrise over the shark's fin-shaped Maedorang Island is spectacular.

📍 11, Jamjindo-gil, Jung-gu (Geojampo Port Quay)

• Incheon Airport Terminal 2 Observatory Deck •

A place to look at airplanes from all over the world

Incheon Airport Terminal 2 Observatory Deck is on the 5th floor of the terminal. You can have a close look at the runway and airplanes through the full glass window on one side of the observatory.

📍 446, Terminal 2-daero, Jung-gu (5th floor) ☎ 032-741-0015-6



• Muuibada Nurigil (Muuido Walking Trail) •

This is a natural recreation forest near Hanagae Beach, where you can experience beautiful natural scenery and various tourism attractions.

📍 San151-1, Muui-dong, Jung-gu

☎ 032-751-0426

🌐 www.foresttrip.go.kr

• Muuibada Nurigil (Muuido Walking Trail) •

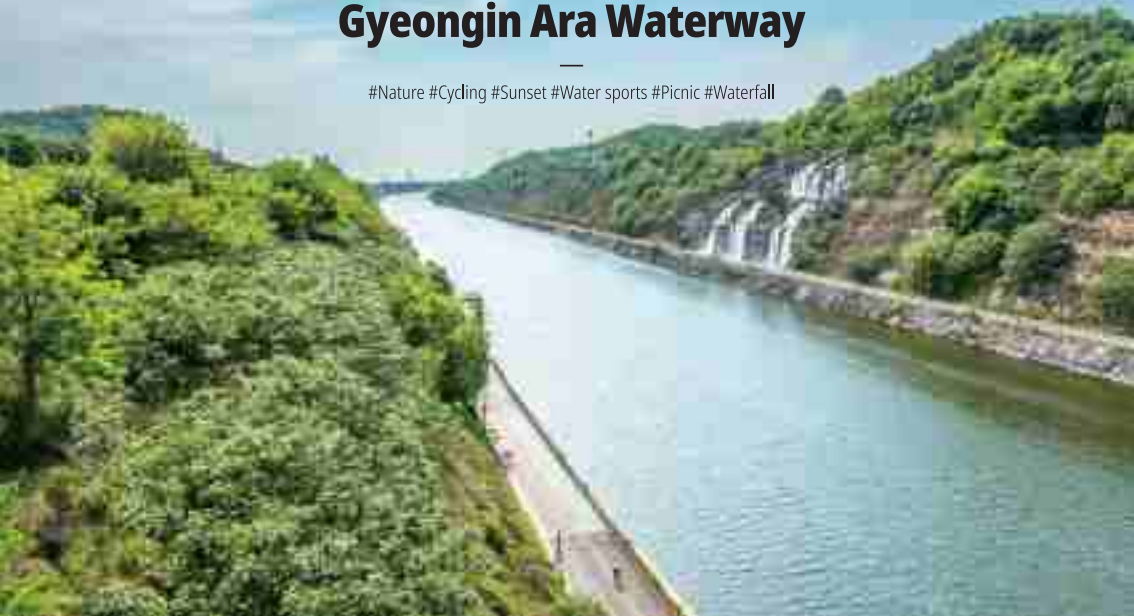
Enjoy a special experience of walking on the sea in the Muuibada Nurigil which takes a trip around Somuuido Island from Indogyo Bridge. It is a 2.5-km-long trail with 8 sections, offering beautiful scenery of the West Sea.



Tour By Area
06

Diverse Waterside Travel along Waterways Gyeongin Ara Waterway

#Nature #Cycling #Sunset #Water sports #Picnic #Waterfall



You can find a scenic view with the observation deck, waterfall, and sculpture park around the waterway connecting the Hangang river and the West Sea. Try taking a cruise along the waterway or experience water activities such as kayaking and yachting. Cycling or taking a walk are other fun options. The flowers greet you every season, and colorful lights illuminate the night on the bridge over the water.

How to get there

SUBWAY Near Airport Railroad (AREX) Geomam Station, Gyeong Station

Recommended Course



Ara Maru

This circular observatory offers the best view on the waterway. At night, the splendid lights illuminating the floor make this a popular tourist attraction.

- 📍 228, Ara-ro, Gyeong-gu
- 🕒 09:00 - 22:00 open every day / Restricted in the case of bad weather such as snow, rain, or strong winds)



Ara Falls

This artificial waterfall was made by using the canyons of Gyeongyangsan Mountain. Looking at the waterfall cascading down creating white foam will blow away the summer heat.

- 📍 26-12, Duksil-dong, Gyeong-gu



Jeongseojin

Jeongseojin is an antipode of Jeongdongjin, Gangneung. It is a dock due west of Gwanghwamun in Seoul. It is a famous sunset viewpoint and there is the symbolic sculpture of Jeongseojin, Sunset Bell.

- 📍 Oryu-dong, Seo-gu

Sunset Bell

This symbolic sculpture of Jeongseojin is a combination of 'pebbles', the most familiar material in the West Sea, and the 'bell' that rings for a new future.



Travel Tip

Two-wheeled adventure along with the Waterways, Ara Bike Path

Ara Bike Path along the Ara Waterway is a popular place for many cyclists. You can enjoy riding a bike as there are many rental shops around Ara Waterway as well as Gyeong Station.

+ Recommended Course for Cycling





Canalway Waterside Park

There are many cafes and restaurants in the urban waterway called Canalway. It is famous for its exotic atmosphere and beautiful nightscape.

📍 Cheongna-dong, Seo-gu



Sicheon Park

A representative waterfront park in the Gyeongin Ara Waterway Area, Sicheon Park offers a picnic area for families and a resting stand to enjoy the surrounding scenery.

📍 163-12, Sicheon-dong, Seo-gu



National Institute of Biological Resources (NIBR)

Visitors can meet a wide diversity of life ranging from wild creatures to rare species of Korea. It offers a variety of contents, including the Maze Garden made with Oriental arborvitae, and Gotjawal Conservatory made with purification plants.

📍 42, Hwangyeong-ro, Seo-gu ☎ 032-590-7000 🌐 www.nibr.go.kr



Suhyangwon

When you step into the gate surrounded by the low wall, you will find a Korean-style garden harmonizing perfectly with beautiful nature. The magnificent Suhyangru Pavilion with hiped-and-gable roof, upright pine trees, and bamboo will remind you of the dignity of classical scholars.

📍 305-49, Seonjuji-dong, Gyeyang-gu

Travel Tip

Camping with Greenery

Along Gyeongin Ara Waterway, there are camping sites for auto camping and glamping in the heart of the city. Camping sites are furnished with clean facilities, including sinks and shower rooms.

Tips to enjoy
100 Times More

Gyeongin Ara Waterway

• Dream Park Wildflower Complex •



Dream Park, which used to be used as a landfill for the capital area, is now a popular place to visit. You can see many kinds of wildflowers, and the park is divided into the Nature Learning Observation Zone, Wildflower Garden, and Wetland Observation Zone.

📍 170, Jawonsunhwan-ro, Seo-gu ☎ 032-560-9940
🌐 www.dreamparkcc.or.kr

• Cheongna Lake Park •

Urban Healing Space, Cheongna Lake Park

Located at the center of Cheongna International City, Cheongna Lake Park has a 4.3km trail and a supersized music fountain that spouts water up to 75 meters high. The park is well-known as being the filming location for the drama, 'Golbin.'

📍 204, Cheongna-daero, Seo-gu
☎ 032-456-2749
🌐 www.insiseol.or.kr/park/cheongna



• West Sea 5 Islands Marine Product Culture Complex (Raw Fish Center) •



Enjoy fresh and chewy sliced raw fish caught from the nearby West Sea 5 Islands every morning here. You can also find the West Sea 5 Islands PR Center and Fish Market.

📍 651, Jeongseojin-ro, Seo-gu

Zoom in

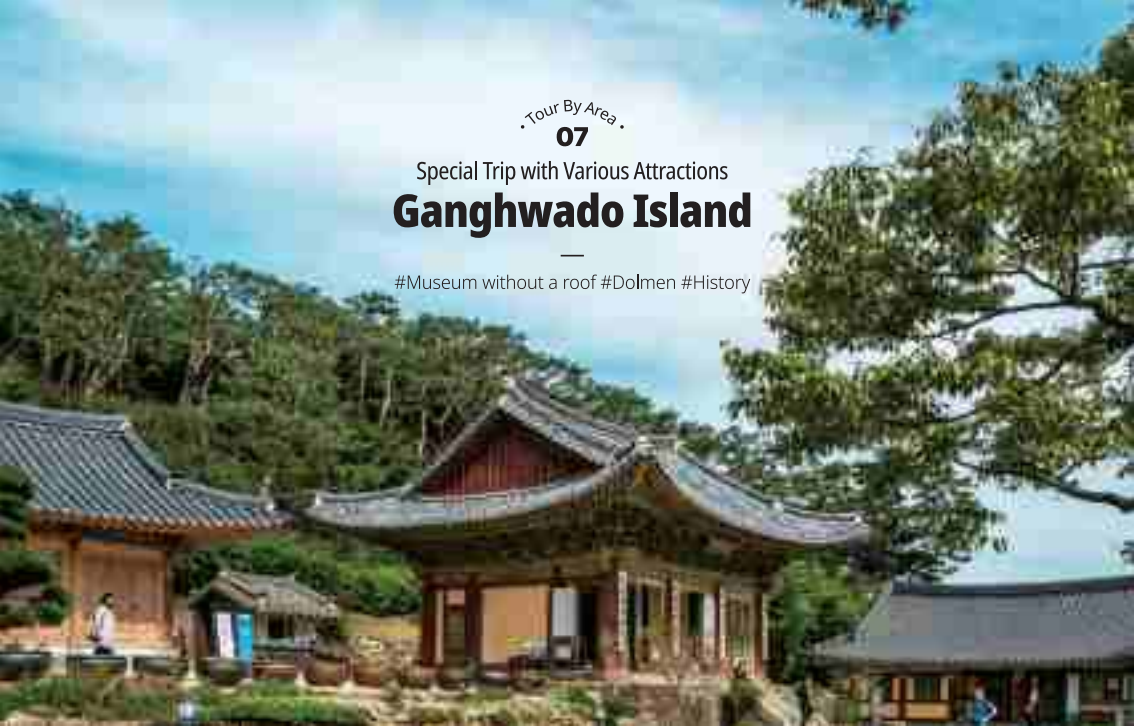
Ara Tower Observatory

Ara Tower Observatory with a vast blue ocean view

At the Ararium PR center on the 1st floor, you can learn various information about the history of Gyeongin Ara Waterway and its vision. From the observatory on the 23rd floor, you can view the West Sea, Ara Waterway, and the area around Cheongna in Seo-gu.

📍 41, Jeongseojin 1-ro, Seo-gu
☎ 1899-3650 (Ara Tourist Information Center)



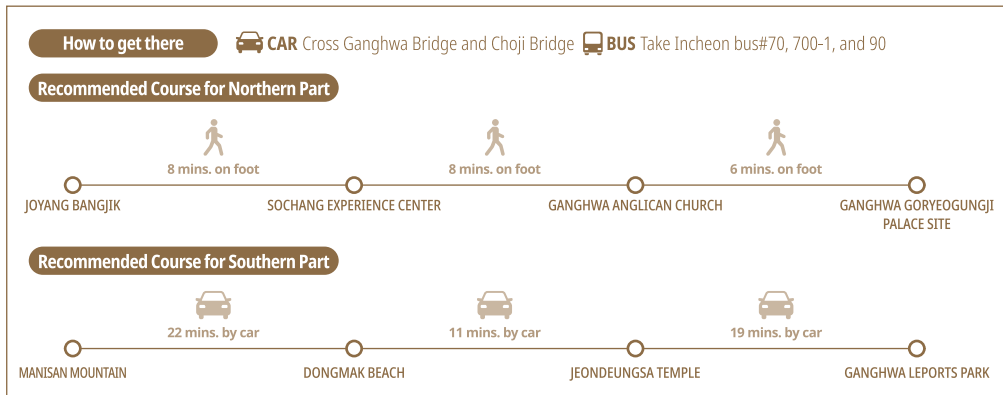


Tour By Area
07

Special Trip with Various Attractions Ganghwado Island

#Museum without a roof #Dolmen #History

Ganghwado Island is a major tourist attraction of Korea. It was originally an island, but is now connected to land by the bridge, so it can be reached easily by car. As there are various tourist attractions for history, culture, experience, picnic, and entertainment, you may need plenty of time to fully enjoy Ganghwado Island.



Travel Tip

Ganghwa Mugwort Experience

Ganghwa mugwort has higher efficacy and more effective compared to regular mugwort. You can experience the efficacy of mugwort in person through foot bath, foot cautery, and fumigation, and you can also buy a variety of local products made with mugwort such as mugwort pills, mugwort tea, mugwort extracts, and so on.

📍 157-1, Haeandong-ro, Gilsang-myeon, Ganghwa-gun

Dolmen in Bugeun-ri

This is the largest dolmen on Ganghwado Island. It became a UNESCO World Heritage Site in 2000. Ganghwa History Museum and Ganghwa Natural History Museum stand next to the dolmen, where you can explore the history, culture, and natural history from the past to the modern and present ages.

Dolmen in Bugeun-ri

📍 994-12, Ganghwa-daero, Hajeom-myeon, Ganghwa-gun

Ganghwa History Museum

📍 994-19, Ganghwa-daero, Hajeom-myeon, Ganghwa-gun

Ganghwa Natural History Museum

📍 994-33, Ganghwa-daero, Hajeom-myeon, Ganghwa-gun



Ganghwa Peace Observatory

When going up the Ganghwa Peace Observatory, you can get a panoramic view of Haechang-ri and Samdal-ri in Gaepung-gun, North Korea. On a clear day, you can see North Koreans with the naked eye, and Songaksan Mountain revealing its beauty.

📍 797, Jeonmangdae-ro, Yangsa-myeon, Ganghwa-gun

☎ 032-930-7062 🌐 www.ghss.or.kr



Hwamunseok Culture Hall

This exhibition hall was established to preserve and exhibit the history and production methods of Hwamunseok, a specialty of Ganghwado Island. Visitors can take a look around handicrafts made with sedge as well as Hwamunseok, and try making the handcraft with local artisans in person.

📍 413, Jangjeongyango-gil, Songhae-myeon, Ganghwa-gun

☎ 032-930-7060

🌐 www.ghss.or.kr



Ganghwa Anglican Church

The building boasts a unique harmony of traditional Hanok-style exterior and Roman cathedral-style interior. It was built in 1900 and worship is still carried out every week.

📍 10, Gwancheong-gil 27beon-gil, Ganghwa-eup, Ganghwa-gun
☎ 032-934-6171



Ganghwa Pungmul Market

You can find all Ganghwa's special products at this marketplace, such as Ganghwa turnip, Ganghwa ginseng, Ganghwa wormwood, yellow sweet potato, dried seafood, and salted fish. On the 2nd floor of the market, there are restaurants for Ganghwa Mugwort Steamed Buns and Incheon's special delicacy, large-eyed herring, where are very popular among foodies.

📍 17-9, Jungang-ro, Ganghwa-eup, Ganghwa-gun
☎ 032-934-1318



Yeonmijeong

This is where the Imjingang and Hangang River meet, where you can see the best scenery at the mouth of the Hangang River. Enjoy a rest in the pavilion with beautiful rooflines under an old zelkova tree.

📍 270-1, Wolgot-ri, Ganghwa-eup, Ganghwa-gun



👉 Travel Tip

Ganghwa Battlefields

(Ganghwa Goryeogungji Palace Site, Gapgotdondae Fortification, Gwangseongbo Fortress, Deokjinjin Fortress, and Chojijin Fortress)

Ganghwa Island has a history of fighting against oppression in fierce battles against foreign invasions due to its pivotal location in marine transportation leading to the Hangang River. Gapgotdondae Fortification, Gwangseongbo Fortress, Deokjinjin Fortress, and Chojijin Fortress were all battlefields, while Goryeogungji Palace Site retains the history of the Goryeo Dynasty as a capital for 39 years after its relocation. Take a look around the Ganghwa battlefields along the coastline from Goryeogungji Palace Site in the northern part of Ganghwa.

Goryeogungji Palace Site 📍 42, Bungmun-gil, Ganghwa-eup, Ganghwa-gun
Gapgotdondae Fortification 📍 1089-41, Gapgot-ri, Ganghwa-eup, Ganghwa-gun
Gwangseongbo Fortress 📍 833, Deokseong-ri, Bureun-myeon, Ganghwa-gun
Deokjinjin Fortress 📍 846, Deokseong-ri, Bureun-myeon, Ganghwa-gun
Chojijin Fortress 📍 624, Choji-ri, Gilsang-myeon, Ganghwa-gun



Dongmak Beach

The mudflats of Dongmak Beach is one of the world's five largest mudflats with a land area of about 60 square kilometers. You can enjoy the beach at high tide and tidal flat experience at low tide.

📍 1481, Haeannam-ro, Hwado-myeon, Ganghwa-gun
☎ 032-937-4445



Jeondeungsa Temple

Jeondeungsa Temple is the oldest temple in Korea. When you enter the temple, you will feel as if being deep in the mountains. A temple stay program is available and attracts many Koreans and foreigners for the experience.

📍 37-41, Jeondeungsa-ro, Gilsang-myeon, Ganghwa-gun
☎ 032-937-0125 🌐 www.jeondeungsa.org



Manisan Mountain

Manisan Mountain is the highest in Ganghwa Island at an altitude of 427 meters above sea level. Climbing up the mountain, you can see the Healing Forest dense with pine trees. In this reserve forest for the genetic conservation of pine trees, visitors can experience a moment of healing through the abundant amount of phytoncide. On the hillside, you will find Chamseongdan Altar, where Dangun is believed to have held rituals to the heavens.

📍 San 35, Sangbang-ri, Hwado-myeon, Ganghwa-gun
☎ 032-930-7068





Janghwa-ri Sunset Viewing Point

If you are looking for the most beautiful sunset viewpoint in Ganghwa, you must go to Janghwa-ri Sunset Viewing Point. The sunset here is popular among photographers owing to its picturesque scenery.

📍 Janghwa-ri Beach, Hwado-myeon, Ganghwa-gun



Boleumdo Island-Jumundo Island

On Boleumdo and Jumundo Islands, you can experience untainted beauty and tidal flats. In Boreumdo Island, there is a clean tidal flat where the natural monument blackfaced spoonbills inhabit, and you can dig out various shellfish such as common Oriental clams, short-necked clams, and surf clams. In Jumundo Island, there is Seodo Central Church, a Korean-style Hanok church built in 1923.

+How to get there

- 📍 Ganghwa Seonsu Dock - Boleumdo Dock (About 70mins.)
- 📍 Ganghwa Seonsu Dock - Salgotji Dock (About 40mins.)

👉 Travel Tip Thrilling Unique Activities

1 Ganghwa Seaside Resort Luge

Riding down a 1.8 km track on a luge is a breathtaking experience. The landscape of Ganghwa and sunset looking down from the gondola is another attraction point.

📍 217, Jangheung-ro, Gilsang-myeon, Ganghwa-gun
☎ 032-930-9000

3 Oktoki Space Center

Visitors can experience science through materials that draw infinite imagination, such as space, dinosaurs, and robots. In the outdoor theme park, there are unique spaces including Sledding Slope and Dinosaur Forest.

📍 403, Ganghwadong-ro, Bureun-myeon, Ganghwa-gun
☎ 032-937-6917

2 Tianlim-Ganghwa Leports Park

There are various attractions such as ziplining, Kart racing, and paint ball facilities, along with a relaxing space in the nature. Visit Tianlim if you want to enjoy dynamic leisure sports and relaxation at the same time.

📍 546-34, Jungang-ro, Bureun-myeon, Ganghwa-gun
☎ 032-937-7481 🌐 www.tianlim.co.kr

4 Sound Experience Museum

This museum traces the history of the development of musical instruments. Here, children can enjoy various experiences with musical instruments and explore the world of unique sound.

📍 11, Haeannam-ro 474beon-gil, Gilsang-myeon, Ganghwa-gun
☎ 0507-1415-7154



Tips to enjoy.
100 Times More

Ganghwa Island

• Sochang Experience Center •

Sochang is a natural fabric that was used as diapers for babies in the past. Ganghwa Island was influenced by Gaeseong, North Korea since long ago, and had an active Sochang market. At the Sochang Experience Center, you can make your own Sochang, and can also try on traditional Goryeo costumes.

📍 8, Nammunan-gil 20beon-gil, Ganghwa-eup, Ganghwa-gun
☎ 032-934-2500



• Joyang Bangjick (Sinmun-ri Art Museum) •

As the textile industry's decline, the textile factory building was left abandoned by was later renovated to the Sinmun-ri Art Museum (cafe). You can explore the old architecture from the 1930s at the cost of a cup of coffee.

📍 12, Hyangnamu-gil 5beon-gil, Ganghwa-eup, Ganghwa-gun
☎ 032-933-2192



• Haeden Museum of Art •

You can meet artworks by world-famous contemporary artists. This premium cultural complex is popular for its nature-friendly architecture, collection and exhibition of contemporary art, as well as an educational hall.

📍 44, Jangheung-ro 101beon-gil, Gilsang-myeon, Ganghwa-gun
☎ 032-937-6911~2
🌐 www.haedenmuseum.com
🎫 Admission : Adults KRW 13,000 / Students KRW 7,000

• Deorimi Museum of Art •

This museum has facilities like work exhibition room, folk museum, work room, and cafe, and you can appreciate the works of Art Brut. There are also performances, art experience learning, art therapy, and workshops as well as exhibitions.

📍 14, Seonwonsaji-ro 51beon-gil, Seonwon-myeon, Ganghwa-gun
☎ 032-933-9297
🌐 deorimimuseum.com
🎫 Admission : KRW 2,000

• Ganghwa Must-try Foods Salted Shrimp and Short Rib Soup •

This originated from the food served to the Goryeo royal family during the days of the struggle against the Mongols. The soup is boiled with pork ribs and seasoned with Ganghwa salted shrimp.





Gyodongdo Island

Old and Fond Trip Down Memory Lane

#Daeryong Market #Nostalgia #Civilian control line #Swallow

How to get there Cross Gyodong Bridge

Gyodongdo Island may seem desolate because visitors have to cross the civilian control line to enter. But this island is as peaceful and quiet as any other island in Incheon. A considerable number of residents of Gyodongdo Island are from Yeonbaek-gun in North Korea. People who fled from the Korean War settled down on this island. This might be the reason why there are traces of old times here, as if time had stopped ticking.

Gyodong Studio

You can take a photo wearing school uniforms, training suits, and hats from the old days. Taking a photo wearing old clothes brings back memories for the older generation and creates new ones for the younger generation.

📍 38, Daeryongan-gil, Gyodong-myeon, Ganghwa-gun
☎ 032-934-0200



Gyodong Swallow Nest (Welcome Center)

Swallows return to their birthplace every year and therefore hold a special meaning for displaced people who miss their home. Gyodong Swallow Nest is a tourist information center created and named after this meaning. This Center offers a variety of experiences including VR tour for Gyodongdo tourist attractions, and publishes Gyodong Newspaper.

📍 20-1, Gyodongnam-ro, Gyodong-myeon, Ganghwa-gun
☎ 032-934-1000



Daeryong Market

This market was created by displaced people for them to make a living during the Korean War, replicating Yeonbaek Market in their hometown. Visitors can find old stores that maintain their looks from the 1960s to 1970s in the same place, such as dabang(tea cafe), tailor's shop, drugstore, and barber, and so on.

📍 35, Gyodongnam-ro, Gyodong-myeon, Ganghwa-gun



Gyodonghyanggyo Confucian School-Gyodongeupseong Fortress

Gyodonghyanggyo Confucian School was built in 1127 when Munseonggong An Hyang brought the statues of Confucius and Zhu Xi on the way back from the Yuan Dynasty and enshrined the images. Gyodongeupseong Fortress is near Gyodonghyanggyo Confucian School, which was built in 1629.

Gyodonghyanggyo Confucian School

📍 229-49, Gyodongnam-ro, Gyodong-myeon, Ganghwa-gun

☎ 032-932-6931

Gyodongeupseong

📍 577, Eumnae-ri, Gyodong-myeon, Ganghwa-gun ☎ 032-930-3627



Gogu Reservoir

Visitors can see a landscape of elegant lotus every summer. The harmony created by the observation deck crossing the reservoir, pavilion, and lotus flowers is spectacular. People often call here a sacred place for avid fishers because there are many native crucian carps in all seasons.

📍 73, Gogu-ri, Gyodong-myeon, Ganghwa-gun



Travel Tip

Foods with old memories

While walking around Daeryong Market, you will come across snacks with old memories, such as sweet rice griddlecake with sugar filling, corn dogs, twisted donuts, and so on. At Gyodong Dabang that is located inside the alley, visitors can drink beverages that can make you nostalgic, such as homemade Ssanghwa tea and Omija Tea.

Nanjeong-ri Sunflower Village Garden

Nanjeong 1-ri residents all joined in the efforts to plant sunflowers to vitalize the village. As many as 100,000 sunflowers create a splendid view along with the Nanjeong Reservoir.

📍 Nanjeong-ri, Gyodong-myeon, Ganghwa-gun



Gyodong Manghyangdae

Displaced people, who were refugees fleeing from Yeonbaek, Hwanghae-do during the Korean War, held ancestral rites here looking at their hometown. It is a 15-minute drive from Daeryong-ri, Gyodongdo. Visitors can have a view of the North Korean village using a telescope in the observatory.

📍 San 129, Jiseok-ri, Gyodong-myeon, Ganghwa-gun





Seokmodo Island

Healing Island with Beautiful Sunset

#Sunset #Healing #Hot spring #Beach #Tidal flat

How to get there Cross Seokmo Bridge

With beautiful harmony between the mountains and sea, Seokmodo Island is accessible by car passing Ganghwado. This is a popular destination for relaxation as visitors can enjoy the outdoor hot spring, forest, and beach all at one place, not to mention a beautiful sunset.



Seokmodo Mineral Hot Spring

The hot spring water is rich in minerals as it is made purely from water coming from a 460-meter-deep granite layer. Bathing in the open-air hot spring with a view of the sun setting over the sea will completely relieve your fatigue.

865-17, Samsannam-ro, Samsan-myeon, Ganghwa-gun
032-930-7053

Minmeoru Beach

This 1km long sandy beach is a representative tourist destination at Seokmodo Island. Visitors can enjoy the beautiful sunset here as well as the beach and mudflats. You can also get on a boat to fish at Eoryujeong Port or Janggot Port.

872, Maeum-ri, Samsan-myeon, Ganghwa-gun
minmeoru-beach.co.kr

Seokmodo Natural Forest

This is a great place to relax by walking through many native plants in the lush forest. With various convenience facilities and spaces, you can relieve your fatigue by feeling the beauty and scent of nature.

39-75, Samsanse-ro, Samsan-myeon, Ganghwa-gun
032-932-1100 www.foresttrip.co.kr



Bomunsa Temple

You will be overwhelmed by the statue of a reclining Buddha and feel the best healing moment while looking at the West Sea and the sunset with 500 disciples all having different faces and the Seated Stone Buddha, which was carved on Nunsseopbawi Rock.

44, Samsannam-ro 828beon-gil, Samsan-myeon, Ganghwa-gun
032-933-8271 www.bomunsa.me



Seokmodo Island Arboretum

The arboretum was developed along the valley around Seokmo-ri. The natural scenery of lush forests and various native plants are preserved in their original state. The interior consists of 12 themed gardens including Iris Meadow, Flower Garden, and Rock Pine Garden. You can join the forest experience program where forest commentators talk about the ecology of various plants and trees.

161, Samsanbuk-ro 449beon-gil, Samsan-myeon, Ganghwa-gun
032-932-5432

East Asian Seepweed Habitat

East Asian seepweed shows off its true beauty from June to September. The red East Asian seepweed spanning out on the tidal flat is reminiscent of the glow of autumn leaves on the sea.

Near the coastal roads between Bomun Dock and the rest area in Maeum-ri, Samsan-myeon, Ganghwa-gun.

Travel Tip

Flavor of the Ocean

Let's try soy-marinated crab and sweet and sour large-eyed herring salad on Seokmodo Island. Once you have a bite of this delicacy, you will feel your mouth being full with flavor of the West Sea. Try soy-marinated crab and sweet and sour large-eyed herring salad with steamy hot rice. You will be surprised to find your bowl empty in a blink.

Seokmo Bridge

Although Seokmodo Island is not far from Ganghwado Island, you could not go to Seokmodo without getting on a boat because there was no bridge. Since Seokmo Bridge was built in 2017, now it is easy to travel to Seokmodo.

Old Downtown Area

Nonstop Shopping Trip from
Traditional Markets to Trendy Cafes

Bupyeong-gu

#Underground shopping arcade #Shopping
#Culture #Young street #Incheon hot place

In Bupyeong, you should be careful not to lose track of your way and time. The world's largest underground shopping mall, traditional markets above ground, and a wide variety of restaurants are all eye-catching places, so you may lose track of time. The day in the shopping paradise Bupyeong is very short because there are so many things to eat and enjoy.

Incheon Butterfly Park

Incheon Butterfly Park is an eco-playground that offers the Butterfly Ecology Center and Wetland Garden on an area of 180,000m² at the foot of Jangsusan Mountain. You can observe butterflies directly and view various exhibitions related to butterflies.

📍 26-47, Pyeongcheon-ro, Bupyeong-gu 📞 032-509-8820
🌐 portal.icbp.go.kr/butterflypark



Bupyeong Culture Street-Pyeongnidan-gil

Bupyeong Culture Street is a place where people, culture, food, and stores are all gathered together. Pyeongnidan-gil is now a famous attraction in Bupyeong as young merchants opened a wide range of cafes, restaurants, dessert shops, and fashion shops with creative ideas.

Bupyeong Culture Street 📍 78-2, Bupyeongmunhwa-ro, Bupyeong-gu
📞 032-511-5890
🌐 www.bcstreet.com

Pyeongnidan-gil 📍 207-70, Bupyeong-dong, Bupyeong-gu



🔍 Zoom in

Wonjeoksan Park

In Wonjeoksan Park, you can enjoy romance and relaxation while feeling Wonjeoksan cherry blossom trail in the spring and the yellow ginkgo forest in autumn. Besides, there are other various spaces such as sports facilities, ecological wetlands, and children's playground.

📍 71-11, Cheongcheon-dong, Bupyeong-gu



Bupyeong History Museum

Visitors can learn the history of Bupyeong from prehistoric to modern times and the history of Bupyeong inhabitants. It displays the Japanese Army's arsenal (weapons and gun factory) materials and the Mitsubishi Workers' Dormitory model, making it an educational place to look back on our painful history.

📍 151, Gulpo-ro, Bupyeong-gu 📞 032-515-6471
🌐 portal.icbp.go.kr/bphm



Camp Market

The space that used to be separated from our sovereign power for the past 80 years, including the Japanese Army's arsenal and the U.S. Army's logistics support base, was transformed to a cultural park for the citizen.

📍 Sangok-dong, Bupyeong-gu area



Tips to enjoy
100 Times More

Bupyeong-gu

• Bupyeong Modoo Mall •
(Bupyeong Underground Shopping Arcade)

Bupyeong Underground Shopping Arcade boasts the largest scale in the world. In 2014, it was recognized as setting the word record for having the largest number of stores for an underground shopping mall within a single area. You can find many fashion items and accessories at affordable prices.

📍 69, Bupyeong-daero, Bupyeong-gu area

• Bupyeong Must-try Foods •



Various Foods in Bupyeong

Bupyeong Seafood Stew Street is famous for seafood stew boiled with seasonal seafood that lives up to its street name, and in the special food street, Gulpo Food Street Town, you can taste all kinds of delicacies. You will be warmly greeted, and extra food is a bonus.

📍 Bupyeongmunhwa-ro, Bupyeong-gu area

Old Downtown Area

Special Getaways from
Everyday Ordinary Life

Namdong-gu

#Park #Fish market #Experience
#Downtown #Sorae Port

From the energy of the city center to the greenery of the forest and the abundance of the sea, Namdong-gu is a place where the word 'coexistence' suits perfectly. Major administrative agencies, department stores, and commercial centers are widely developed here, and the natural environment, including mountains, fields, wetlands, and the sea, is well harmonized with industrial complexes.



Sorae Port&Sorae Fish Market

When the tide rises on the shore, fishing boats return one by one. This is an ordinary view of Sorae Port. In the representative fish market of the metropolitan area where fishing boats are still moored, you can find fresh seafood like crabs, shrimp, and flatfish every season.

Sorae Port

📍 111-200, Nonhyeon-dong, Namdong-gu
🌐 sorae-pogu.co.kr

Soraepogu Complex Fish Market

📍 12, Soraejeok-ro, Namdong-gu
🌐 sorae49.com/main/ko/index.html

Soraepogu Traditional Fish Market

📍 86-17, Jando-ro, Namdong-gu
🌐 soraesijang.com



Incheon Grand Park

Visitors can see cherry blossoms, roses, and other beautiful flowers blooming every season here, and there are many different species living in the zoo, botanical garden, and arboretum. With bike paths and camping sites, it is the best place for family picnics.

📍 San 79, Jangsu-dong Namdong-gu
☎ 032-466-7282



Sorae Ecology Park

There is an exhibition hall, seawater foot bath, and bay salt experience program within the park. It is a popular spot for many photographers to take a picture of the reeds with red windmills.

📍 1-55, Nonhyeon-dong, Namdong-gu
☎ 032-435-7076
🌐 www.incheon.go.kr/park/park010301



Sorae Railway Bridge

There used to be the Suin Line Narrow Gauge Railway connecting Incheon and Suwon in the past. Today, it has become a place to take a walk after renovating the remaining railway bridge.

📍 Nonhyeon-dong, Namdong-gu 111-10

Guwol-dong Rodeo Street

Rodeo Street, which overflows with young energy, is a representative downtown area of Incheon, along with Bupyeong Culture Street. You can find all kinds of attractions to enjoy such as a department store, movie theater, restaurants, and cafes on this street.

📍 Near Incheon Culture & Art Center Station, Guwol-dong, Namdong-gu

Tips to enjoy
100 Times More

Namdong-gu

• Sorae History Museum •



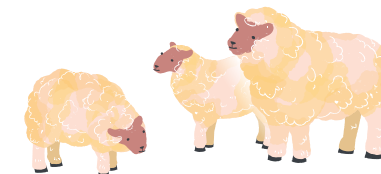
Sorae History Museum exhibits the history of Sorae Fish Village and origin of the Sorae salt farm. You can find the reproduction of Suin Line Narrow Gauge Railway, the first steam locomotive for narrow gauge in Korea.

📍 1605, Aam-daero, Namdong-gu
☎ 032-439-5003 🌐 museum.namdongcmc.co.kr

• Neulsolgil Park (Sheep Farm, Hinoki Cypress Forest) •

The sheep farm in Neulsolgil Park is a small ecological experience space in the urban city, where you can meet a flock of sheep that graze freely. In the cypress forest, you can lie down on a forest bath chair with your eyes closed and take a rest while opening up all of your five senses.

📍 783, Aenggogae-ro, Namdong-gu



Old Downtown Area

Time Travel by Walking Down Memory Lane

Dong-gu· Michuhol-gu

Baedari # Secondhand Bookstore Street #Filming site of 'Goblin' #Traditional culture

Dong-gu holds the passions of the modern times at every alley. While walking around this area, you may feel as if time stands still, which makes it more relaxing and friendly. In Michuhol-gu, you can find Incheon of the Joseon Dynasty. It is a good place to visit with your children as there are spaces dedicated to experience fun traditional culture.



Baedari Secondhand Bookstore Street

Discover old books no longer available in the market or find an old book holding a place in your memory. You never know which book will be waiting for you in these bookstores.

📍 18-10, Geumgok-ro, Dong-gu



Incheon Dohobu Government Office· Incheon Hyanggyo Confucian School

Incheon Dohobu Government Office used to serve governmental administration in the Joseon Dynasty, but now provides a space for traditional cultural experiences. Hyanggyo, which used to be an educational institute, still offers programs on traditional courtesies and etiquette, carrying on its legacy.



Incheon Dohobu Government Office

📍 589, Maesocho-ro, Michuhol-gu
☎ 032-422-3492
🌐 www.dohobu.org



Incheon Hyanggyo

📍 442, Maesocho-ro, Michuhol-gu
☎ 032-876-7041
🌐 www.ichg.or.kr

Baedari Match Village Museum

Joseon Incheon Company, Korea's first match manufacturer established in 1917 was located in Baedari. It exhibits the process of manufacturing matches, its history, Joseonpyo Matches and Ssangwonpyo Matches.

📍 19, Geumgok-ro, Dong-gu



Sudoguksan Museum of Housing & Living

This museum represents the past of Songrim-dong and Songhyeon-dong, which were called 'moon neighborhoods.' You can look into the lives of ordinary people in the 1960 and 1970 from a tiny store and a briquette shop.

📍 51, Solbit-ro, Dong-gu
☎ 032-770-6131
🌐 www.icdonggu.go.kr/open_content/museum



Baedari Art Stay 1930

It was opened in 2022 after renovating three inns (Giljo, Seongjin, and Jindo) which were in operation in Baedari in the late 19th century. It became an everyday culture and rest area with a cafe and art museum.

📍 1-4, Geumgok-ro 11beon-gil, Dong-gu ☎ 0507-1322-3834



Tips to enjoy
100 Times More

Dong-gu·Michuhol-gu

• Dong-gu Must-try Foods •

Various foods in Dong-gu

Old ports in Dong-gu still supplies marine products from active fishing activities of fishing boats. This is why Manseok-dong Jukkumi Street settled here a long time ago. Hwapyeong-dong Cold Noodle Street, Songhyeon-dong Sundae Street, and Songlim-dong Chicken Altang Street are also popular spots for foodies.

Cold Noodle Street 📍 Hwapyeong-ro 8beon-gil, Dong-gu area

Jukkumi Street 📍 9, Manseok-ro, Dong-gu area

Sundae Street 📍 Hwadojin-ro 43beon-gil, Dong-gu area

Chicken Altang Street 📍 169, Satgo-ro, Dong-gu

• Subong Park Starlight Festival •



Illuminating the night sky, Subong Byeolmaru is a starlight festival in Subong Park with eight themes. You can take fond memories home with once-in-a-lifetime photos with beautiful lights.

📍 84, Subongan-gil, Michuhol-gu

Trip to Islands in Incheon

#168 islands #Refresh #Relaxing #Nature

A city with 168 beautiful islands shining like stars. From a light-hearted trip to Sindo, Sido, Modo Islands that only take 10 minutes on a ferry ride, to long journey to Baengnyeongdo Island which takes 4 hours by fast-sailing ship, let's go on a trip to islands in Incheon to take a break from everyday life.

☎ 032-899-2210 (Ongjin County Office Tourism Culture Promotion Department)

☎ 1599-5985 (Incheon Port Passenger Terminal)



Enjoy Incheon Islands

How to get to islands in Incheon

Island	Departure	Travel Hours
Sindo-Sido-Modo	Yeongjongdo Island Sammok Quay	10mins.
Jangbongdo	032-751-2211	40mins.
Deokjeokdo		(High speed) 1hr 10mins. (General) 1hr 50mins.
Seungbongdo		1hr 15mins. 1hr 35mins.
Jawoldo	Incheon Port Coastal Passenger Terminal Information Center 032-570-6118	50mins. 1hr 20mins. 1hr 30mins.
Daejakdo Sojjakdo	Daebudo Island (Bangameori) 032-886-7813	2hrs 10mins.
Baengnyeongdo		(AM) 4hrs (PM) 5hrs
Daechongdo Socheongdo		3hrs 40mins. 3hrs 20mins.
Yeonpyeongdo		2hrs

※ Travel time is subject to change depending on the courses.

※ You can go to Seungbongdo, Daejakdo, and Sojjakdo Islands from Bangarneori Quay, Daebudo Island.

Best Tips for Island Tour!



• Water & Snacks •

Make sure to take some water and snacks as you may not be able to find a convenience store in small islands.



• Accommodations •

You can stay overnight in a pension or B&B but please make sure to bring your own toiletries.



• Drug Store •

There are medical centers but prepare medicine for emergencies.



• Car rental •

Rental cars are allowed in some islands including Baengnyeongdo, Deokjeokdo, and Jangbongdo.

Sindo-Sido and Modo Islands

ONGJIN-GUN

#Beach #Sculpture Park #Bike-riding #Electric bike

How to get there Sammok Quay, Yeongjongdo Island - Sindo Island (About 10mins.). You can travel by land between Sindo, Sido, and Modo Islands.

It takes only 10 minutes from the Sammok Quay to Sindo, Sido, and Modo Islands. You can find many lightly clad tourists riding bicycles. While feeling the cool sea breeze on a bicycle, you can blow away stress from your everyday lives.

Trip to Nearby Islands

Jangbongdo Island



This is a great destination for camping, trekking, and bicycling. You can see shell wave-patterned rocks only at low tide along the coast from Yunokgol to Gamakmeori Observatory. The oddly formed rocks, strangely shaped stones, and wave-patterned rocks look profound and mysterious. Ongam Beach is a famous camping site. Convenience facilities including toilets, shower rooms, and sinks for washing dishes are all available free.

How to get there Sammok Quay, Yeongjongdo Island / Sindo - Jangbongdo (About 40mins.)

Modo Island Baemikkumi Sculpture Park

Baemikkumi was named after the shape of the seashore that looks like a bottom hole of a ship. You can see artworks by sculptor Lee Ilho exhibited against the beach.



Sido Island Sugi Beach

There are many sea creatures living on this long beach that bends like a bow. On a clear day, you can get a close look of Manisan Mountain in Ganghwado on the other side.



Modo Bakjugi Beach

Bakjugi was named after the bat-shaped land. The small beach is charming, but most people come here to see the sculpture with the letters 'MODO.' You can take a great selfie in front of a red sculpture that is in perfect harmony with the blue sky.



Zoom in

Driving on the Island

Sindo, Sido, and Modo Islands are popular for the unique experience of riding electric bikes thanks to its gentle slopes. Ride a bike and enjoy the sea breeze along the beautiful landscape.

Deokjeokdo Island

ONGJIN-GUN

#Pebbles #Trekking #Refreshing #Camping #Old pine trees #Forest bath

How to get there Incheon Port Coastal Passenger Terminal - Deokjeokdo Island (About 1hr 10mins.)

Deokjeokdo Island is the best spot at the Ongjin Beach. Worthy of its reputation, it offers trekking, sea bathing, and sea fishing, as well as convenience facilities such as accommodations and rental car services. You should get on a car ferry at Deokjeokdo Island to go to Mungapdo or Gureopdo Island.

Trip to Nearby Islands

Soyado Island

Located near Deokjeokdo Island, Soyado is now accessible by crossing Soya Bridge, and you can travel the two islands like one. Soyado Island still preserves its nature as it is. Ttebburi Beach is one of the major attractions. In the summer, many people visit this place to experience the tidal flat as well as sea baths. It is popular for digging out clams. The sea, islands, and ships that you might encounter while crossing Yeondo Bridge look dazzling in the blue.

Gulupdo Island

Gulupdo Island is a popular destination for backpacking. While walking along Gaemeori Hill, you will find a beautiful coastline that appears entwined. It would be a great pleasure to see oddly formed rocks and strangely shaped stones as well as a herd of deer on the hill. There are also Mokgimi and Keunmal Beach with fine sands.

How to get there Deokjeokdo Island - Gulupdo Island (About 1hr)



Seopori Beach

Vast ocean, wide beach, and flapping wings of seagulls. Seopori Beach has many fun attractions. On the access road of the beach, there is a forest of old pine trees, where you can take a leisurely stroll and relax.



Neungdong Pebble Beach

This beach is full of various sizes of pretty pebbles. The sound of walking on the pebbles gives a unique echo in your heart. At the end of the beach, there are oddly formed rocks and strangely shaped stones, and looking at the sunset with those rocks will surely let you have a relaxing retreat. On the opposite side, there is Seonmido Island, which is a lighthouse island.



Guksubong Peak-Bijobong Peak Trekking

There is a special charm to trekking on Deokjeokdo as it offers visitors a view of various islands and the coastlines of islands around Deokjeokdo while hiking. It takes about 6 hours for the hike, and You can enjoy a forest bath strolling through the coniferous forest.

Daeijakdo Island

ONGJIN-GUN

#Buasan Mountain #Beach #Deck trail
#Grassy sandbank (Puldeung) #Seop (Mussel)

How to get there Incheon Port Coastal Passenger Terminal - Daeijakdo (About 1hr 30mins.)
Bangameori Quay, Daebudo Island - Daeijakdo (About 1hr 40mins.)

The blue sea looking down from the top of Buasan Mountain and the Puldeung mirage appearing above the sea only at low tide are the highlights of Daeijakdo Island. A vast expanse of sand appearing close to Soijakdo Island creates another stunning scenery.

Buasan Mt. Suspension Bridge

In the autumn season, many people visit Buasan Mt. Suspension Bridge. While going up Buasan Mountain, you will be greeted by beautifully colored autumn leaves and be stunned by the panoramic ocean view from the suspension bridge.



+ Buasan Mountain Samsin Grandmother's Well

Visitors can find a well on the way down from Buasan Mountain, where it was believed to be lustral water that makes your wishes come true and a life-giving water for fertility and safeguarding children.



Puldeung

As the highlight of the trip, this can be experienced only on Daeijakdo Island. It is a sand island also called 'Pulchi,' and appears only at low tide. You should be on time to see this because this sand island appears only for six hours a day, and it disappears in an instant when the tide rises. You can view the entire shape of Puldeung from the top of Buasan Mountain.

Jageunpuran Beach

You can see the beautiful sea by walking on the deck along the beach. While you are walking on the deck, the oldest rock in Korea will catch your attention. There is a pavilion at the end of the deck, offering you a relaxing retreat.

Daeijakdo Must-try Foods

Daeijakdo Seop (Mussel)

Seop looks like a mussel, however, its size and taste are completely different. Seop is collected mostly in April, and you can try signature dishes like Seoptang and kalguksu(chopped noodles).



Seungbongdo Island

ONGJIN-GUN

#Trekking #Koggiribawi Rock
#Chotdaebawi Rock #Walking

How to get there Incheon Port Coastal Passenger Terminal - Seungbongdo Island (About 1hr 15mins.)
Bangameori Quay, Daebudo Island - Seungbongdo Island (About 1hr 35mins.)

This island is called the 'Seungbongdo' because of its shape like a flying phoenix. It has fantastically shaped rocks and a sandy beach. Many trekkers travel around Seungbongdo Island.

Trip to Nearby Islands

Jawoldo Island



Mokseom Island is a must-visit destination during your trip to Jawoldo Island. It is located along a coastal road on the right-hand side of Dalbawi Quay, and is connected with the suspension bridge, making you feel as if you are on water. Jawoldo Island is also well-known for its pine trees, soft sand, and fishing from the rocks on the seashore.

How to get there

Incheon Port Coastal Passenger Terminal - Jawoldo Island (About 50mins.)
Bangameori Quay, Daebudo Island - Jawoldo Island (About 1hr 20mins.) - Seungbongdo Island - Jawoldo Island (About 20mins.)

Namdaemunbawi Rock(Kokkiri Rock)

This rock only shows itself at low tide. It looks like a giant gate like Namdaemun Gate, and people also call it 'kokkiribawi Rock(elephant Rock)' because of its elephant-like look from a certain angle. The sea that can be viewed between the rocks shines even more beautifully, contrasting with rocks.



Tille Beach

On a sunny day, the beach shines with silvery sand. Unlike most tidal flats on the west coast, there is no tidal flat exposed even during low tide. The beach is surrounded by a lush pine tree forest, so you can take a stroll here while admiring the sunset.

📍 534, Seungbong-ri, Jawol-myeon, Ongjin-gun



Chotdaebawi Rock

This is called Chotdaebawi Rock because of its shape like a candlestick soaring upwards the sky. This rock is located on the edge of Sorigaesan Mountain at the southeastern dock of Seungbongdo Island. You can also see the Samhyeongjebawi (Three Brothers) Rocks where three rocks are huddled together.

Baengnyeongdo Island

ONGJIN-GUN

#Coastal view #Geopark #Kongdol Beach # Simcheong #Sagot Naengmyeon

How to get there Incheon Port Coastal Passenger Terminal - Baengnyeongdo Island (About 4hrs)

From this northernmost island in the West Sea, you can see Jangsangot in North Korea on a clear day. It has drawn great attention since being recognized as Baengnyeong and Daechong Geopark in 2019. The island is famous for Baengnyeongdo-style cold noodles, fermented sand eel, and Baengnyeongdo wormwood.



Kongdol Beach

Natural Monument No. 391, Kongdol Beach is a 2 km-long coast covered with pebbles, so you can walk barefoot or lie on them as if you were taking a dry sauna. The sound of waves crashing on pebbles is another healing point.



Dumujin

You will be fascinated by the stunning coastal scenery, strange rocks, and bizarre stones that look as if they are floated on the water. You can have a whole view of Dumujin from the ferry or take a closer look at the inside of Dumujin when taking a walk. From the top of Dumujin, you can view North Korean territory.



Baengnyeongdo Heunnarae Trail

Baengnyeongdo Island is a cultural ecological trail that captures the beautiful nature. It consists of nine unique courses including Yonggipomaji Trail, Jeombakimulbeom Trail, Eunbitsagot Trail, Osaekkongdol, and Dumubigyeong Trail.

Yongteurimbawi Rock(Twisting Dragon Rock)

There are two rocks that rise in a twisted shape toward the sky. You can feel a mysterious energy when looking at the Yongteurimbawi Rock rising up with the sea and sky in the background.

Baengnyeongdo Must-try Foods

Sagot Naengmyeon(cold noodles)

Sagot Naengmyeon on Baengnyeongdo Island is quite a treat. This Hwanghaedo-style cold noodle is made with high buckwheat content. Seasoned with fermented sand eel, the broth is rich, savory, and tasty.



Simcheonggak Shrine

At Simcheonggak Shrine, you can see Indangsu Sea where Simcheong jumped to sacrifice herself, and Yeonbongbawi Rock, the site of her reincarnation. There are various materials related to Simcheongjeon on the 1st floor, and the PR center and resting space are on the 2nd floor. On a clear day, Jangsangot in North Korea can be seen.

📍 109-117, Baengnyeong-ro 316beon-gil, Baengnyeong myeon, Ongjin-gun



+ Sculpture of Simcheong

It expresses a scene from the Korean classics, Simcheongjeon.

Junghwa-dong Church· Baengnyeong Catholic Church

This was the second church established in Korea in 1898, following the establishment of Sorae Church in Hwanghae-do. The ashes of Father Taegon Kim, Korea's first Catholic priest, is laid in Baengnyeong Catholic Church, which makes the island an important historic site for Korean Catholicism.

Junghwa-dong Church

📍 230-7, Junghwa-gil, Baengnyeong-myeon, Ongjin-gun
☎ 032-836-0277

Baengnyeong Catholic Church

📍 66, Baengnyeong-ro 254beon-gil, Baengnyeong-myeon, Ongjin-gun
☎ 032-836-1221

Sagot Beach

On Natural Monument No. 391, Sagot Beach, fine and solid sand spread out for about 3km. It is a great place for playing with kids thanks to the clear and shallow water.

Daecheongdo Island · Socheongdo Island

ONGJIN-GUN

#Geopark # Growth Ring Rock #Lighthouse
#Sand dune #Skates

How to get there Incheon Port Coastal Passenger Terminal-Daecheongdo Island · Socheongdo Island (About 3hrs 40mins.)

Geologic sceneries capturing ancient mysteries can be found throughout the island. The coastline is beautiful and blue enough to fill your gaze. While trekking, you will find yourself immersed in the scenery.



Socheongdo Lighthouse

It stands like a watchman guarding the blue sea. It takes a role of lighthouse at night, but the daytime view is quite different. Everywhere is open to the sky and the sea, and you can see the Socheongdo Limestone Islet far away along the coastline.

📍 279, Socheongseo-ro, Daecheong-myeon, Ongjin-gun
☎ 032-836-3104



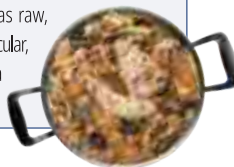
Seopungbaji Cliff

How would it be like to go trekking while having a view of the sea? Seopungbaji Cliff will answer this question as it is a popular trekking destination all year round. The magnificent vertical cliffs of white quartzite and indigo sea are the best healing points.

Daecheongdo Must-try Foods

Daecheongdo Skate Dish

Daecheongdo Island is the place where the largest number of skates are caught in Korea. You can taste diverse skate dishes at a reasonable price, such as raw, steamed, stewed, and deep fried. In particular, Hongoe Aetang (skate fish offal soup) is a delicacy that you must try.



Okjukdong Coastal Dune

It is amazing to experience a sandy dune on the island. It is known as the 'Sahara of Korea,' and the sand here is so fine and soft that it can be swept away with even a gentle wind. You can have a unique experience of leaving your trace on the sand walking down step by step.

+ Sand dune in Korea

Take a photo with the camel sculpture and desert in the background! You will feel as if you were really in the Sahara.



Socheongdo Limestone Islet · Stromatolite

Socheongdo Limestone Islet gleams white in the moonlight at night. When there were no lighthouses long ago, ships used to find their way by looking at Socheongdo Limestone Islet in the distance. Stromatolite is a fossil generated by blue green algae or cyanobacteria living in the sea or lake. It is the oldest bacterial fossil in Korea and is called Oystershells Rock.



Jiduri Beach

This beach is surrounded by a range of mountains of the coast. It is the best place for sea bathing with fine and solid sand, and shallow and crystal-clear water. You can observe wave patterns, ripple marks and the geological layer of ancient mysteries just like Nongyeo Beach.



Nongyeo Beach · Miadong Beach

Nongyeo Beach and Miadong Beach become one at low tide. It is magical to see the sandy island Puldeung exposing itself in front of Growth Ring Rock during low tide. Rocks capturing the mystery of tens of thousands of years is truly a work of art created on the beach as a canvas.



Yeonpyeongdo Island

ONGJIN-GUN

#Corbina fishery #Security #Peace #Observatory #Blue crab

How to get there Incheon Port Coastal Passenger Terminal – Yeonpyeongdo Island (About 2hrs)

You can find 'Yellow Corbina Tower' established in the village as Yeonpyeongdo used to be a corbina fishery village. Since being shelled by North Korea in 2010, it has become a famous place for peace and security awareness tourism. The island is still the largest fishing port on the West Sea, where you can experience the warm and generous lives of the islanders.

National Security Training Center

The National Security Training Center was established by rebuilding the building that was destroyed by the North Korean attack in 2010. In the center, you can find contents about the North Korea's shelling on Yeonpyeongdo Island and the damages it caused in Yeonpyeong-ri at that time.

25, Yeonpyeongjungang-ro 12beon-gil, Yeonpyeong-myeon, Ongjin-gun



Corbina Museum

This museum embodies the history of Yeonpyeongdo Island where so many yellow corbinas were caught that they actually held seasonal corbina markets. It is said that more than 300 ships from all parts of the country came to Yeonpyeong Sea to catch corbinas during the late Joseon Dynasty.

83, Yeonpyeong-ro 682beon-gil, Yeonpyeong-myeon, Ongjin-gun



Byeongpungbawi Rock-Garaechilgi Beach

You can find this rock and beach from the Corbina Museum in the northwestern direction. Byeongpungbawi Rock is a magnificent rock to see on Yeonpyeongdo Island, which was formed like a long folding screen due to wave, wind, and time. Going down to the Garaechilgi Beach stretching in front of the rock, you can hear the gentle sound of waves lapping.



Peace Park

Peace Park was established to memorialize and pay tribute to those who devoted themselves to the country in the Battle of Yeonpyeong. While looking around the artifacts of wartime, you will hope that there will be no war in this land again.

75-5, Yeonpyeong-ro, 682beon-gil, Yeonpyeong-myeon, Ongjin-gun



Soyeonpyeongdo Eolgulbawi Rock

Located in the southeast of Soyeonpyeongdo Island, it is called Eolgulbawi (Face Rock) because of its side face-like shape. Trail was recently built, so you can take a photo with the rock as a background.

Manghyang Observatory

It may be a bit tough to get to the observatory, but you can have a close look of North Korea here. Displaced people visit here to perform ancestral ceremonies filled with nostalgia every season.

+ Icecreambawi Rock

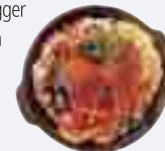
Icecreambawi Rock on the seafront of Manghyang Observatory. It looks like an ice cream when the rock is covered with frozen snow and seawater during the winter.



Yeonpyeongdo Must-try Foods

Yeonpyeongdo Blue Crab Dish

The main job of Yeonpyeongdo fishermen is to catch blue crabs. Yeonpyeongdo crabs are bigger in size and have more meat than crabs from other areas. If you visit Yeonpyeongdo Island in the spring or fall, you must try blue crab.



Seonjaedo Island· Yeongheungdo Island

ONGJIN-GUN

#Mokseom Island #Terrace cafe #Coastal walking
#Sand beach

How to get there You can travel by land between Daebudo, Seonjaedo, and Yeongheungdo Islands. Take metropolitan bus #790 (Ongjin-gun Office · Seonjaedo-Yeongheungdo Islands)

You can access these islands without getting on a boat as they are connected by a bridge. If you want to go on a botherless trip to an island, this is the perfect place. You can drive to the island to experience the wide-open sea and fresh raw fish.



Yeongheungdo Island Simnipo Beach (Korean Hornbeam Habitat)

Korean hornbeam forest cools off the heat in the summer and protects against the wind in the winter. You can take a walk here to enjoy the ocean view along the deck road.

📍 734, Nae-ri, Yeongheung-myeon, Ongjin-gun
☎ 032-886-6717 🌐 www.simnipo.com



Seonjaedo Mokseom Island

A magical sand route opens to Mokseom Island at low tide. When you get to Mokseom, while enjoying the sound of sand, you can find rock with oysters stuck on and various sizes of rocks piled up like mountains. Mokseom Island was once selected as the most beautiful island in Korea by CNN.

Yeongheung Energy Park

In this edutainment exhibition center, you can learn about electric energy through experience-based programs. It includes contents related to the history of electricity and the development of thermal and nuclear power generation in Korea.

📍 52, Yeongheungnam-ro 293beon-gil, Yeongheung-myeon, Ongjin-gun
☎ 070-8898-3570
🌐 www.koenergy.kr



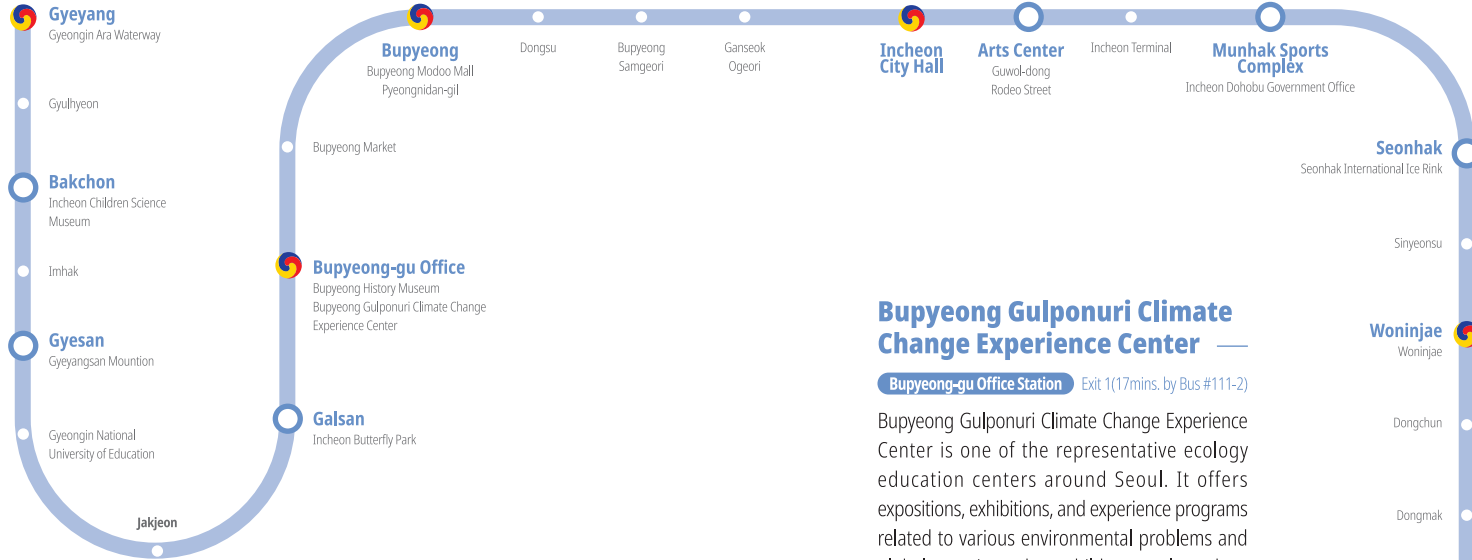
Railroad Trip

#Incheon Line 1 #Incheon Line 2
#National Railway Line 1
#Suin Bundang Line

A railroad trip in Incheon offers small but pleasant experiences. You can travel using Incheon Line 1 and 2, Suin Bundang Line, Airport Railroad, Maglev Train, Subway Line 7, and National Railway Line 1. Covering all areas of Incheon, the railway connects many tourist attractions, which makes your trip easy and convenient.



Incheon Line 1



Incheon Children Science Museum

Bakchon Station Exit 2(10mins. on foot)

This is a great place for children to experience science. This center has different levels of science experience exhibitions, so children can learn science customized to their ages.



📍 21, Bangchuk-ro, Gyeyang-gu 📞 032-456-2500
🌐 www.insiseol.or.kr/culture/icmuseum

Gyeongansan Mountain

Gyesan Station Exit 5(10mins. on foot)

Gyeyang Mountain represents Incheon, standing 395 meters above sea level. Pink azaleas cover the entire mountain in the spring and colorful autumn leaves turn the mountain red in the fall. Many people from not only Incheon but also Seoul visit to hike here.



📍 Gyesan-dong, Gyeyang-gu
📞 032-450-5654 (Gyeyang-gu Office)

Bupyeong Gulponuri Climate Change Experience Center

Bupyeong-gu Office Station Exit 1(17mins. by Bus #111-2)

Bupyeong Gulponuri Climate Change Experience Center is one of the representative ecology education centers around Seoul. It offers expositions, exhibitions, and experience programs related to various environmental problems and global warming, where children can learn how precious nature is.



📍 267, Jangje-ro, Bupyeong-gu 📞 032-509-3901
🌐 portal.icbp.go.kr/bpgncce

Seonhak International Ice Rink

Seonhak Station Exit 1(15mins. on foot)

As the only ice rink meeting international competition standards in Incheon, it holds many various domestic and international ice sports events. The rink is also available for rental when there are no events. The passion of ice sports can always be felt here.



📍 526, Gyeongwon-daero, Yeonsu-gu
📞 032-821-5723

Woninjae

Woninjae Station Exit 1(4mins. on foot)

This is the tomb of Yi Heo-gyeom, the progenitor of the Incheon Yi family. Seunggichun Stream flowing in front of Woninjae, walking trails, and old trees all combine in perfect harmony, and you can feel a classical mood from the old building.



📍 322, Gyeongwon-daero, Yeonsu-gu
📞 032-821-1230

Incheon Line 2



Moraena Market

Moraena Market Station Exit 3 (1min. on foot)

Starting as an agricultural products wholesale and retail market, the market now sells a variety of products such as apparel, dishware, industrial products, livestock and marine products, as well as food. In this market, you can experience generosity on top of excellent quality and low prices.

- 42-8, Hogupo-ro 810beon-gil, Namdong-gu
- 032-471-1427
- moraenaemarket.com

Geomdan Prehistory Museum

Wanjeong Station Exit 1 (20mins. by Bus#20)

With the theme of prehistoric times, this museum exhibits the model of various prehistoric relics. At the experiential learning center, visitors can experience prehistoric culture such as grinding rice seeds using cobblestones or gravel boards.



- 7, Gosanhu-ro 121beon-gil, Seo-gu
- 032-440-6790
- www.incheon.go.kr/museum/MU030101

Incheon Asiad Main Stadium

Seo-gu Office Station Exit 4 (20mins. on foot)

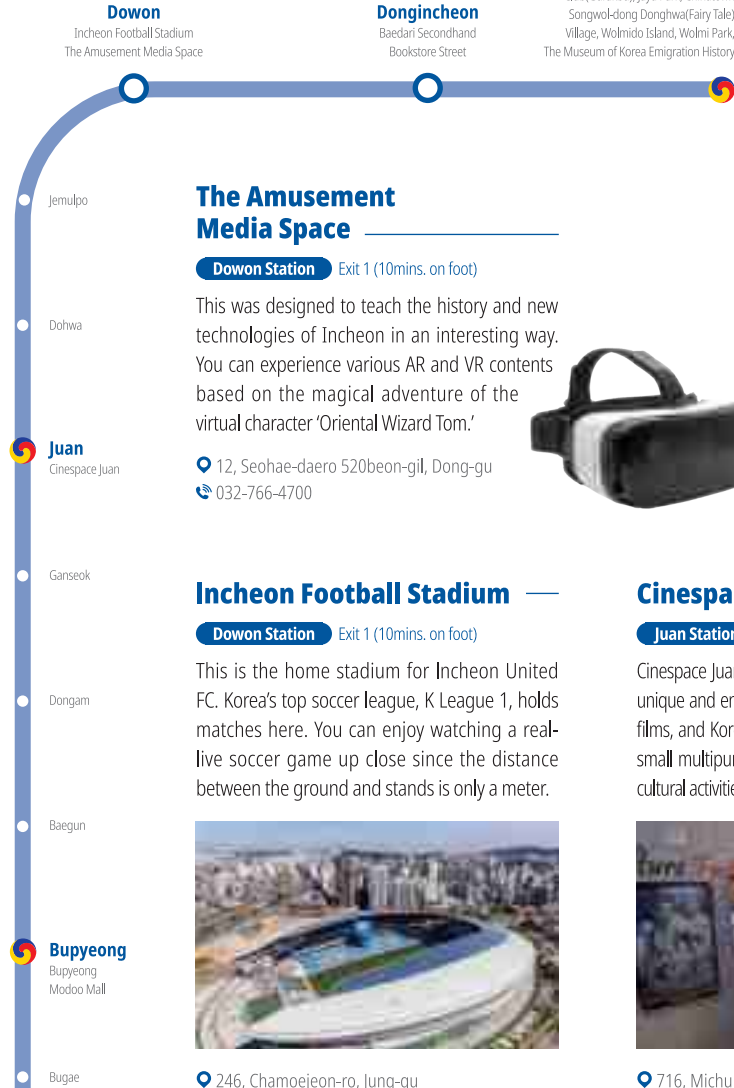
Located in Yeonhui-dong in Seo-gu, the stadium is the venue where the 17th Asian Games were held. With a variety of sculptures and trails around the stadium, it is a good place for family picnics or dates.



- 806, Bongsu-daero, Seo-gu
- 032-456-2100



National Railway Line 1



The Amusement Media Space

Dowon Station Exit 1 (10mins. on foot)

This was designed to teach the history and new technologies of Incheon in an interesting way. You can experience various AR and VR contents based on the magical adventure of the virtual character 'Oriental Wizard Tom.'



- 12, Seohae-daero 520beon-gil, Dong-gu
- 032-766-4700

Incheon Football Stadium

Dowon Station Exit 1 (10mins. on foot)

This is the home stadium for Incheon United FC. Korea's top soccer league, K League 1, holds matches here. You can enjoy watching a real-live soccer game up close since the distance between the ground and stands is only a meter.



- 246, Chamoejeon-ro, Jung-gu
- 032-423-1500

Cinespace Juan

Juan Station Exit 1 (10mins. on foot)

Cinespace Juan screens popular commercial movies, unique and entertaining Korean and international art films, and Korean independent films. There is also a small multipurpose performance hall where various cultural activities like movies and plays are staged.



- 716, Michuho-daero, Michuho-gu
- 032-427-6777

Suin Bandang Line



Incheon Nonhyeon
Neulsolgil Park Sheep Farm

Sorae Port
Sorae Port,
Sorae Railway Bridge

Walgot

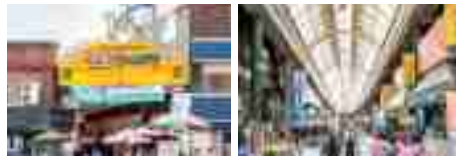
Dalwol

Oido

Sinpo International Market

Sinpo Station Exit 4 (7mins. on foot)

Famous for its sweet and sour chicken, this market has become a hot spot in Incheon since some of its foods such as Sinpo dumplings, sweet and sour chicken, and charcoal-grilled laver were aired on television. Located right next to it, Sinpo Culture Street frequently holds various events, such as fashion shows and song festivals.



📍 6-6, Sinpo-dong, Jung-gu 📞 032-772-5812

Sungui Wood Craft Center

Sungui Station Exit 1 (18mins. by Bus#14)

Sungui Wood Craft Center is a cultural space where woodcraft shops and carpenter's shops are gathered along the Gyeongin Line railroad. Built in 2015, Sungui Wood Craft Center became a landmark through the cooperation of merchants, where you can experience woodcraft in person.



📍 309-8, Chamoejeon-ro, Michuhol-gu
📞 032-888-9837

Memorial Hall for Incheon Landing Operation

Songdo Station Exit 1 (22mins. by Bus #8)

This memorial hall was established to commemorate the Incheon Landing Operation, which was a decisive turning point during the Korean War. The museum exhibits reproduced relics and weapons from the time, which will make history come alive for you.



📍 138, Cheongnyang-ro, Yeonsu-gu 📞 032-832-0915

Incheon Metropolitan City Museum

Songdo Station Exit 1 (20mins. by Bus #8)

Incheon Metropolitan City Museum is the first public museum of Korea. Various historical artifacts related to Incheon are exhibited here. Special exhibitions are sometimes held in the special exhibition hall, so make sure to check out the website regularly.



📍 26, Cheongnyang-ro 160beon-gil, Yeonsu-gu
📞 032-440-6750 🌐 www.incheon.go.kr/museum/MU010101

Songam Art Museum

Songdo Station Exit 1 (25mins. by Bus#112)

More than 9,000 artifacts from ancient to modern times, including sculptures and crafts, are housed in this museum. In the permanent exhibition hall, over 300 artifacts are regularly replaced for the exhibition.



📍 68, Biryu-daero 55beon-gil, Michuhol-gu 📞 032-440-6777
🌐 www.incheon.go.kr/museum/MU020101

Top 20 Wellness Tour Attractions in Incheon

Here, we have the Top 20 Wellness Tour Attractions of Incheon to heal your body and mind through relaxing experiences. They range from tours for enjoying the forest, sea, and nature to spa, meditation, and food therapy enjoyed in the city. Go on a healthy tour to make you happy and smile.

#Healing & Meditation #Beauty & Spa #Natural & Marine healing #Health care #Well-being food

※ Wellness: Combination of the words 'well-being,' 'happiness,' and 'fitness,' meaning a healthy physical, mental, and social state.

01

Lotus Lantern International Meditation Center

You can find peace of mind by taking part in the temple-stay along with the clear sound of wind chimes at a peaceful temple nestled in the mountains.



STORE INFO
 349-60, Ganghwadong-ro, Gilsang-myeon, Ganghwa-gun
 032-937-7033 www.lotuslantern.net

02

Haeden Museum of Art

In the Haeden Museum of Art, an education, culture, and art space, you can enjoy a variety of cultural activities such as large-scale performances, lectures, and creative works.



STORE INFO
 44, Jangheung-ro 101beon-gil, Gilsang-myeon, Ganghwa-gun
 032-937-6911 www.haedenmuseum.com

03

Baramsup Picture Book Library

Created by picture book experts, this picture book library runs book-stay program as well as a small book cafe where you can enjoy homemade pizza & bread and drinks made with organic ingredients.



STORE INFO
 66-34, Deokjin-ro 159beon-gil, Bureun-myeon, Ganghwa-gu
 070-4109-6280
blog.naver.com/baramsupai

04

Gyeongwonjae Ambassador Incheon

A five-star Hanok hotel, Gyeongwonjae Ambassador Incheon offers programs for experiencing traditional Korean culture including traditional Korean food, hanbok, and traditional games.



STORE INFO
 200, Techno park-ro, Yeonsu-gu
 032-729-1101
www.gyeongwonjae.com

05

Jeondeungsa Temple Stay

Jeondeungsa Temple Stay offers customized options along with Buddhist cultural experiences, such as Experience, Rest, and One-day programs.



STORE INFO
 37-41, Jeondeungsa-ro, Gilsang-myeon, Ganghwa-gun
 032-937-0152 www.jeondeungsa.org

06

Choyeon Tea Museum

You can experience Korean tea culture here. This museum has experience programs such as drinking tea, etiquette class, and making flower tea.



STORE INFO
 8-1, Sinpo-ro 39beon-gil, Jung-gu
 032-772-9779
choyeonmuseum.com

07

Trini Yoga & Singing Bowl

Located in Yeongjongdo Island, this retreat center offers various healing programs such as yoga, singing bowl meditation, one-day retreat program with vegan food and tea, and walking on Dulle-gil.



STORE INFO
 27, Baegulloan-gil, Jung-gu
 070-8098-5221
trini.qv.kr

08

The Spa at Paradise

Starting with aroma oil and beautiful flower tea, you can enjoy a spa that harmonizes and balances your body and mind.



STORE INFO
 3F, Red Wing, Paradise City Hotel, 186, Yeongjonghaeannam-ro 321beon-gil, Jung-gu
 032-729-2440, 2441 www.thespa.co.kr

- HEALING & MEDITATION 01~07
- BEAUTY & SPA 08~10
- NATURAL & MARINE HEALING 11~17
- HEALTH CARE 18
- WELL-BEING FOOD 19~20

09

The Spa Hasta

Through eight massage techniques around the world, you can relieve daily fatigue and restore your mind and body balance with segmentalized programs.



STORE INFO

📍 6F, 153, Convensia-daero, Yeonsu-gu
☎ 032-833-8311
🌐 hastasheraton.modoo.at

10

Paradise Cimer

As a space combining European sensitivity with Korean style sauna (Jjimjilbang), Paradise Cimer offers pool party and various themed relaxation facilities.



STORE INFO

📍 186, Yeongjonghaeannam-ro 321beon-gil, Jung-gu
☎ 032-729-2653
🌐 www.p-city.com/front/cimer/overview

11

Wangsan Marina Hyundai Yacht

You can have a close look at the natural scenery on a yacht through experience programs.



STORE INFO

📍 Room A-1, 1F, Wangsan Marina, 143, Wangsan Marina-gil, Jung-gu (Hyundai Yacht)
☎ 032-710-6976 🌐 www.hdcosmos.com

15

Seokmodo Island Arboretum

At Seokmodo Island Arboretum, you can see unique northern limit and marine plants. You can also join forest commentary, infant forest experience, and English forest experience programs.



STORE INFO

📍 161, Samsanbuk-ro 449beon-gil, Samsan-myeon, Ganghwa-gun
☎ 032-932-5432 🌐 forest.ganghwa.go.kr

16

Agricultural Corporation Pumpkin Club

You can taste cookies, sweet jelly, and steamed bread made with pumpkins and sweet pumpkins grown in Deokjeokdo Island, and also take part in the experience program of making your own perfume, scented candles, and cooking oven-baked sweet rice cake.



STORE INFO

📍 3, Deokjeongnam-ro 54beon-gil, Deokjeok-myeon, Ongjin-gun
☎ 032-832-7782 🌐 www.deokjeok.co.kr

17

Manisan Mountain Healing Forest

Take a walk along the phytoncide-filled forest and you will relieve all your stress and find peace of mind.



STORE INFO

📍 18, Manisan-ro 675beon-gil, Hwado-myeon, Ganghwa-gun
☎ 032-930-7068 🌐 www.ganghwafocus.com

12

Palmido Island Tour

You can see Incheon's first lighthouse on a cruise ship and meet the natural environment up close in addition to white coral and strangely shaped rocks along with the sea.



STORE INFO

📍 1F, Observatory, Yeonan Pier Marine Square, 36, Yeonanbudo-ro, Jung-gu (Hyundai Marine Development)
☎ 032-885-0001 🌐 palmido1.modoo.at

13

Bandi World

This is a great healing place to visit with the family as you can feel the nature change throughout all four seasons with your whole body.



STORE INFO

📍 12-26, Dorimbuk-ro 19beon-gil, Namdong-gu
☎ 032-434-0557
🌐 www.instagram.com/bandi_sesang

14

Mr. Tom Tree House

This tree house surrounded by nature consists of tree houses in various shapes and concepts. It is a good place to visit with children as you can try the craft workshop experience and the playground in the forest.



STORE INFO

📍 14-32, Haeannam-ro 1998beon-gil, Hwado-myeon, Ganghwa-gun
☎ 0507-1327-0306
🌐 www.instagram.com/kspaint0811

18

Yakseokwon

You can taste healthy foods made of wormwood, one of Ganghwa-do's specialties, as well as red ginseng and Goshihikari rice.



STORE INFO

📍 56-53, Jungang-ro 787beon-gil, Yangdo-myeon, Ganghwa-gun
☎ 032-937-5338
🌐 ysc533.modoo.at

19

Geumpung Brewery

A century-old brewery is listed as a cultural asset of Incheon. You can taste makgeolli made in the traditional way, and also find unique souvenirs and experience programs.



STORE INFO

📍 8, Samnangseong-gil, Gilsang-myeon, Ganghwa-gun
☎ 070-4400-1931
🌐 www.instagram.com/on_sul

20

Dongguk Meditation Center Sandeulchae

You can cook and eat nature-friendly food in this food therapy space. There is also a meditation space where you can relax.



STORE INFO

📍 27, Yesu-ro 20beon-gil, Yeonsu-gu
☎ 032-816-7890
🌐 www.donggukmc.kr

Incheon Theme Travel

Moments you can experience only in Incheon such as new spaces, romantic lights, warm-hearted food, old alleys tracing modern times, and beautiful islands with blue seas.

Enjoy the moments in your own taste and style.

#New #Shining #Tasty #Story #Viewtiful



————— New OPEN

New Landmarks

Wherever you take a picture in Incheon, it becomes a postcard thanks to the beautiful scenery created by the harmony of nature and people. We have collected several spots that will become new landmarks in Incheon.

- LIST** — Ganghwa Hwagaesan Monorail
Incheon Airport Tourist Center
Somuuido Island Storium
National Museum of World Writing Systems
Sangsang Platform

————— Shining SPOT

Incheon Nightscape Viewpoints

The sky slowly darkens. As it is filled with darkness in every corner, Incheon quietly emits light and soon shines brightly. Here, we introduce 10 night viewpoints in Incheon colored with romance, a city that will make you stop in your tracks.

- LIST** — Songdo Central Park/ Long Beach Park / Wolmi Theme Park / Open Port Area Gwandong Church / Open Port Area Literature Retail Store / Jayu Park / Tri-bowl / Triple Street / G-Tower / Wolmisan Mountain



©김찬석 작가

Tasty SPOT

Tasty Road (Incheon foreigner-friendly business)

Perhaps the greatest pleasure of traveling is the pleasure of eating. Various restaurants and cafes are emerging as the new prides of Incheon and international cities as they are captivating foreigners' tastes.

Tip box Foreigner-friendly Restaurants & Cafes

Stores certified as foreigner-friendly businesses have English menu, English-speaking staff, and emojis indicating whether they offer social media in English.

- LIST** — SUTA5900 Campus Town Branch / NAIROBI COFFEE Bistro / CAE VANILLA BEAN / Jungcheongru / Reserve 9 / Susanchon Songdo Main Store / Nice Time / VERTEX Songdo Branch / Café ORLE / 3CHON COFFEE / ACE CRAB / WOO MAN DANG / GALLIA Restaurant / Hyehwadong Pork Outlet Cinema Incheon Central Branch / Outback Steakhouse Songdo Branch / DUPBOBJOONG etc.
(25 restaurants and cafes as of October 2023)



————— Story SHOT

Travel to Modern Times

Incheon open port street is a modern and contemporary cultural area with a long history. The open port street remains the same as if time stood still, but the way of travelling around the open port street is now completely different. You would feel too sorry to keep the tracks of modern history in your eyes only. Come and experience it with your whole body.

- LIST** — Electric car tour / Tantra / Black and white photo studio 'Yeonseol' / Gyeongseong dress room / Jiin craft workshop etc.

————— Viewtiful TIME

Exotic Oceanview Café

As the island is surrounded by the ocean, there are cafes with wide and open scenery everywhere, which will refresh you just by looking at it. You can have a pleasant experience along with the horizon that borders the sky and the sea and ocean view of Seonjaedo Island.

- LIST** — FLOREDO Coffee / Caffe PONTE / MUD Coffee / Seonjae-ri Coffee House / SSANGGOM Dabang / Hi Bada etc.



Incheon by Numbers

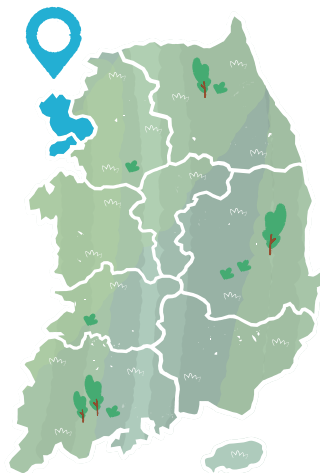
all ways INCHEON

The BI (Brand Identity) of Incheon is 'all ways Incheon.' It means that not only skyway and waterway, but also all ways to history, culture, in the world lead to Incheon which is a gateway city with Incheon Int'l Airport and Incheon Port.

Area

The total area of Incheon is **1,065.23km²** as of 2020, making it the largest city of all Special and Metropolitan City Governments in Korea.

Administrative Organization : **8** districts (gu), **2** counties (gun), **1** town (eup), **19** townships (myeon) and **168** treasure islands



Population

NO.3 Special and Metropolitan City Government in South Korea

The population of Incheon is 2,938,429, which is the third most populated city in Korea after Seoul and Busan.

2,938,429 persons



Weather

Located in the Midwest of the Korean Peninsula, Incheon has both continental and marine climates.

The coldest day on record for Incheon was -21°C, while the hottest day was 38.9°C.

The average temperature is 12.1°C, which is 0.7°C lower than Seoul.



Infrastructure

Opened on March 29, 2001, Incheon International Airport was ranked the best airport in the world. It is currently connecting 173 cities in 52 countries.

Travel time to tourist sites : **1** hour

An hour is more than enough to reach downtown Incheon from Incheon International Airport (20mins. to Songdo International City, 45mins. to the Open Port in Jung-gu, and 90mins. to Ganghwa Island). Once you step off the airplane, your journey to Incheon begins.



Get closer to Incheon Tour

Smart travel to Incheon with Incheon Easy

Incheon Easy provides various travel information and useful services for your trip. You do not have to plan things out in advance, and instead simply use 'Incheon Easy' to enjoy smart travelling. Enjoy smart experiences such as the Stamp Tour, AR/VR time travel, and game-type audio guide, and discount coupons are also available on the application.



Scan the QR code and download the application



+ Info

Make your trip more fun with Easykku

Designed with the motif of Kongdol (pebble) at Kongdol Beach in Baengnyeongdo Island, 'Easykku' is a signature character of Incheon Easy characterized by an e-shaped nose of Incheon Easy.

Precious item Seaweed socks, a gift from Kongdol friends

Specialty Staying up for a long time in the center of Wolmido Taga Disco

Cultural Tour Guides

Cultural Tour Guides are programs in which specialists offer professional and easy explanations to tourists on the cultural heritage and tourist resources of Incheon. The guide service is free of charge and not available on Mondays and when the attraction is closed.

+ How to Use Visit the Cultural Tour Guide website (culture-tour.incheon.go.kr) or request service by phone.

+ Courses for Cultural Tour Guide Downtown Incheon: Walking courses (5 courses) / Historical relics, museums, etc. (16 sites) / Bus tour
Ganghwa area: Bus tour / Historical relics, museums, etc. (14 sites)
Onjin area: Fixed course including tourist sites of each island (7 myeon)

+ Inquiry Downtown Incheon ☎ 032-440-4104
Ganghwa area ☎ 032-930-3567
Onjin area ☎ 032-899-2242

Incheon City Tour Bus

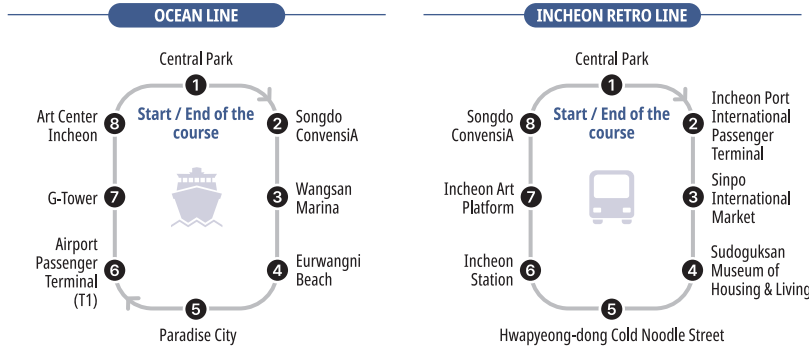


If you have difficulties planning a trip to Incheon, the City Tour Bus will be a good choice. You can enjoy tourist attractions by course on a double-decker bus. There are circulator and theme type tour courses. The circulator-type tour course travels around Incheon Sea and the Open Port Area. The theme-type tour course offers various themes featuring history and culture of Incheon, Ganghwa Island, Night view Tour, etc.

Purchasing Tickets

- + Type of Ticket** 1 day pass
- + Where to Buy** Incheon Tourist information Center (Songdo Central Park), Incheon Station Tourist Information Center, Incheon City Tour website
- + Payment** Cash or credit card
※ You can pay by Incheon Eum card/Transportation card is not acceptable

Circulator-type Tour Course



Fares

Class	Adults	Children, Senior Citizens	Incheon residents (Child, Senior)	The Disabled / Persons of National Merit	Discount on weekdays (Wed-Fri)
Combination Pass	KRW 12,000	KRW 10,000	KRW 10,000(KRW 8,000)	KRW 8,000	KRW 6,000
Ocean Line	KRW 10,000	KRW 8,000	KRW 8,000(KRW 6,000)	KRW 6,000	KRW 5,000
Incheon Retro Line	KRW 5,000	KRW 4,000	KRW 4,000(KRW 3,000)	KRW 3,000	KRW 2,500

※ Combination Pass: Can be used for both Ocean and Incheon Retro Line.

Theme-type Tour Course

- Seonjae-Yeongheung Tour
- Muuido Tour
- Ganghwa Five Senses Tour
- Seokmodo Tour
- Gyodongdo Tour
- Ganghwa History Tour
- Ganghwa Healing Tour
- Sunset & Night Tour

※ Please visit the website for more details on the course and fares for the Theme-type Tour Course.

Inquiry

☎ 1899-0960 🌐 citytour.ito.or.kr

※ Incheon City Tour Bus course is subject to change depending on circumstances.

Wolmi Sea Train



The longest monorail in Korea, Wolmi Sea Train was newly introduced to Wolmido Island. Selected as one of Korea's 100 most popular tourist attractions in 2019, the train travels 6.1 km around Wolmido Island for about 33 minutes. As it runs on a railway at a height of a three-story building, you can enjoy a full view of Incheon Inner Port, the West Sea, and Incheon Bridge along with the beautiful landscape of Wolmido Island. Thanks to the stunning sunset view of the West Sea, it was naturally promoted through word-of-mouth.

Fares

Category	Adults	Teenagers & Senior Citizens	Children	The disabled/Persons of National Merit
Fare	KRW 8,000	KRW 6,000	KRW 5,000	KRW 4,000
Remarks	Re-boarding is allowed only once on the day.			

※ Tickets can be purchased at the ticket machine located at every Wolmi Sea Train station or on the online booking site (www.wolmiseatrain.or.kr). Please make sure to check in advance as it is subject to change depending on the situation.

Routes



Operating Hours

Category	Operating Hours	Remarks
High season (Apr-Oct)	Weekends (Fri/Sat/Sun/Holidays)	Closed on Mondays
	Weekdays (Tue/Wed/Thu)	
Low season (Nov-Mar)	10:00-18:00	

Inquiry

Incheon Transit Corporation Wolmi Operation Team

☎ 032-450-7600



How to get to Incheon from Incheon International Airport

Airport Railroad (A'REX)

Airport Railroad (A'REX) is the fastest and easiest way that connects Incheon Int'l Airport and Seoul Station. There are two types of trains: 'Express Train,' which runs nonstop between Seoul Station and Incheon Int'l Airport, and the 'All Stop Train,' a commuter train which stops at all 14 stations.

- 📍 B1F, Transportation Center, Incheon Int'l Airport Terminal 1 / B1F, Transportation Center, Incheon Int'l Airport Terminal 2
- ☎ 1599-7788 (Main number of Airport Railroad)

Call Van

The best option for a group of 5 travelers or less with 20 kg of luggage per person. You can save the time on transfers, and travel pleasantly even if you travel with many people. It is also a good option for small size groups with a lot of luggage.

- 📍 Near Gate 9, 1F, Incheon Int'l Airport Terminal 1 or visit 'Airport Call Van Information Counter' near Gate 4, 1F, Incheon Int'l Airport Terminal 2
- ☎ Incheon Int'l Airport Terminal 1 032-743-0828 / Incheon Int'l Airport Terminal 2 032-743-0831

Limousine Bus

You can purchase a ticket at the Airport Information Desk or at unmanned ticketing machines located in front of the bus stops (pay by card only). If you have cash only, you should buy a ticket at the desk inside the airport.

- 📍 1F, Incheon Int'l Airport Terminal 1 / B1F, Incheon Int'l Airport Terminal 2
- ☎ 02-2667-0386 (K Airport Limousine)

Taxi

There are general taxis, deluxe taxis, and taxi vans (9-seater). An extra charge will be added for general taxis when you travel intercity and late at night from midnight to 4am. International taxis have foreign language support services for English, Chinese, and Japanese, which requires a booking at the Airport Information Desk.

- 📍 1F, Incheon Int'l Airport Terminal 1 (5C, 6C, 6D, 7C, 8C, 4C) / 1F, Transportation Center, Incheon Int'l Airport Terminal 2 (5C, 4D, 3C, 3D, 5D, 1C)
- ☎ 1577-2600 (Incheon Int'l Airport Customer Center)

i There are Terminal 1 and Terminal 2 in the Incheon International Airport! Free shuttle buses are available between the two terminals.

• Incheon International Airport Terminal 1 •

Asiana, Jeju Air, Air Busan, Air Premia, T'way, Eastar Jet, Air Seoul, and other foreign carriers

• Incheon International Airport Terminal 1 Shuttle Bus •

Exit 8, 3F, Incheon International Airport Terminal 1 (every 10mins.)

• Incheon International Airport Terminal 2 •

Korean Air, Jin Air, Air France, Delta Airlines, KLM, Garuda Indonesia, Xiamen Air

• Incheon International Airport Terminal 2 Shuttle Bus •

Exit 4 & 5, 3F, Incheon International Airport Terminal 2 (every 10mins.)

Public Transportation

With a single travel card, you can take all types of public transportations including subway and bus. You can also receive transfer discounts, but it is valid only for 30 minutes between public transportation rides. (Transfer discount available for up to 1 hour from 9pm to 7am)

- + How to use** Tap your travel card on the card reader when getting on and off (two times).
- + Note** No transfer discount applied between the same routes.

Travel card



• T-MONEY •

T-MONEY can be used for subway, taxi, airport bus, and metropolitan buses. You can also use it at the major convenience stores and subway unmanned courier storage after recharging at the convenience store.

- Where to Buy** Convenience stores with T-money mark
- Fares** From 3,000won for card purchase / Can be charged from a minimum 1,000won
- Refund the balance** You can get a refund for the balance at the convenience stores (Amount less than 20,000won at the GS25 / 20,000won and less at the 7-Eleven / 30,000won and less at the other convenience stores (CU, MINI STOP)) and for the amount of 50,000won and less, you can get a refund at the subway station service desk after the deduction of refund fee 500won (excluding Seoul Metro Line 9 2-3 phases, Incheon Line 1 & 2).

• MPASS (METROPOLITAN PASS) •



MPASS is a transportation card designed for the convenience of foreign tourists. You can take public transportation including metropolitan subway, Seoul bus, and Incheon Airport railroad up to 20 times a day.

- Where to Buy** Seoul Station T-MONEY Town, 1F, Seoul City Tower, Exit 10, Seoul Station
- Operating Hours** 09:00~18:00 / Excluding on weekends & public holidays
- Fares** 1-Day Pass: KRW15,000 / 2-Day Pass KRW23,000 / 3-Day Pass KRW30,500 / 5-Day KRW47,500 / 7-Day Pass KRW64,500 (Discount 3,000won after 5pm)
- Refund the balance** Including rental deposit of 5,000won
You can get a refund when you return the pass at the Seoul Station T-MONEY Town after 500won for refund fee.

Subway



• ONE-OFF SUBWAY CARD •

A one-off subway card issued from a metro vending machine in subway stations (including a 500won for card deposit). You can get a refund for the deposit when you insert the card into the card return machine upon arrival.

Incheon Accommodations

Songdo International City

Name of Accommodation	Address	No. of Rooms	Phone Number	Website
Gyeongwonjae Ambassador Hotel	200, Techno park-ro, Yeonsu-gu	30	032-729-1101	m.ambatel.com/gyeongwonjae/incheon/ko/index.do
Ramada Songdo Hotel	29, Neungheodaero-ro 267beon-gil, Yeonsu-gu	204	032-832-2000	www.ramada-songdo.co.kr
Bridge Hotel Incheon Songdo	233, Convensia-daero, Yeonsu-gu	241	032-717-0700	www.skyparkincheonsongdo.com
Sheraton Grand Incheon Hotel	153, Convensia-daero, Yeonsu-gu	321	032-835-1000	www.marriott.com/ko/hotels/selji-sheraton-grand-incheon-hotel/overview
Orakai Songdo Park Hotel	151, Techno park-ro, Yeonsu-gu	275	032-210-7000	songdo.orakaihotels.com/kr/default.asp
Holiday Inn Incheon Songdo	251, Incheon tower-daero, Yeonsu-gu	202	032-250-0000	holidayinnincheonsongdo.com/ver01
Oakwood Premier Incheon	165, Convensia-daero, Yeonsu-gu	423	032-726-2000	oakwoodpremier.co.kr/front

Yeongjong and Downtown

Name of Accommodation	Address	No. of Rooms	Phone Number	Website
Grand Hyatt Incheon East Tower	208, Yeongjongghaeannam-ro 321beon-gil, Jung-gu	501	032-745-1234	www.hyatt.com/ko-KR/hotel/south-korea/grand-hyatt-incheon/inche/rooms
Grand Hyatt Incheon West Tower	208, Yeongjongghaeannam-ro 321beon-gil, Jung-gu (Unseo-dong)	523	032-745-1234	
Nest Hotel	19-5, Yeongjongghaeannam-ro, Jung-gu (Unseo-dong)	370	032-743-9000	www.nesthotel.co.kr
Best Western Premier Incheon Airport Hotel	48-27, Gonghang-ro 424beon-gil, Jung-gu (Unseo-dong)	305	032-743-1000	www.airporthotel.co.kr/kr
Ibis Style Ambassador Incheon Airport	340, Je2terminal-daero, Jung-gu	360	032-310-7200	www.ambatel.com/ibisstyles/Incheonairport/ko/main.do
JN Park Hotel	262-15, Yongyuseo-ro, Jung-gu	80	032-752-9892	www.jnparkhotel.co.kr
Paradise City	186, Yeongjongghaeannam-ro 321beon-gil, Jung-gu	1250	1833-8855	www.p-city.com
Harbor Park Hotel	217, Jemullyang-ro, Jung-gu (5, Hang-dong 3-ga)	213	032-770-9500	www.harborparkhotel.com
Yeongjong Inspire IR	700, Yongyu-ro, Jung-gu	1275	-	inspireer.com
Hotel Wanted	20, Bukhang-ro 32beon-gil, Seo-gu	91	032-585-8900	www.hotelwanted.co.kr
Hotel Sopra	21, Seogot-ro 301beon-gil, Seo-gu	164	032-568-8700	www.hotelsopra.com
Park Marine Hotel	44, Soraeyeok-ro, Namdong-gu	88	032-425-2700	parkmarinehotel.co.kr/ko
Soulhada Gyeyang	58, Gyeyangmunhwa-ro, Gyeyang-gu	85	032-272-1700	soulhada.com
Hotel Charis	28, Gyeyang-daero, Gyeyang-gu	154	032-556-0880	www.hotelcharis.com/wp
Hotel Everrich	43, Hwaseong-gil 50beon-gil, Ganghwa-eup, Ganghwa-gun	70	032-934-1688	www.hoteleverrich.com

As of September 2023

Incheon Festivals

※ Festival schedules are subject to change as necessary.

• APR •

Ganghwa Goryeosan Azalea Festival

If you want to feel the spring to the fullest, visit Ganghwa Goryeosan Mountain. Azalea flowers signal that spring is in full bloom in the whole mountain. It is the best of the spring flower festivals in Incheon.

📍 994-19, Ganghwa-daero, Hajeom-myeon, Ganghwa-gun area

• AUG •

Incheon Pentaport Music Festival

Pentaport Music Festival in Incheon consists of the Penta Live Stage, Penta Live Club Music Party, and Penta Youth Star, in addition to Korea's largest rock festival Pentaport Rock Festival. During Incheon Pentaport Music Festival, which is celebrating its 15th anniversary this year, people can enjoy various genres of music performance including rock together with artists.

📍 350, Central-ro, Yeonsu-gu (Songdo Moonlight Festival Park)

• SEP •

INK(INCHEON K-POP) Concert

Since the successful opening in 2009 with great fanfare, this concert has become Incheon's iconic Hallyu (Korean Wave) festival.

📍 Munhak Sports Complex Main Stadium

• OCT •

Sorae Port Festival

This festival is held with the concept of Sorae Port as the only traditional fishing port in the metropolitan area. With various attractions and interesting events, you can mingle with locals.

📍 67, Jangdo-ro, Namdong-gu (Sora Port area)

• JUN-SEP •

Incheon Open Port Culture Night

The Open Port Area illuminates creating different scenes at night. You can explore various cultural performances and exhibitions in the spring and autumn and look around the Open Port Area that was the first area to be modernized in Korea. It is especially fun to look around the cultural assets of modern Korean history illuminating with the beautiful lighting.

📍 Cultural district in Open Port Area in Jung-gu

• AUG-SEP •

Songdo Global Culture Festival

You can enjoy the best world beer and food, exciting live concerts, fireworks, and EDM parties during this festival.

📍 350, Central-ro, Yeonsu-gu (Songdo Moonlight Festival Park)

• OCT •

Bubyeong Pungmul Festival

Bubyeong Pungmul Festival was designed to reproduce the agricultural culture of Incheon and Bubyeong, and to promote traditional culture Pungmul. All participants can mingle together by opening, sharing, exchanging, and communicating through Pungmul.

📍 Bubyeong-daero and Bubyeong area

• OCT •

Dongincheon Nangman Festival

At this newtro (new + retro) market festival, residents and merchants recreate the scenes of Dongincheon Market of the 1970s which was the most prosperous time in its history.

📍 Songhyeon-dong, Dong-gu (North Square, Dongincheon Station)

Festival PHOTOS

📷 GANGHWA GORYEOSAN AZALEA FESTIVAL



📷 INCHEON OPEN PORT CULTURE NIGHT



📷 INCHEON PENTAPORT MUSIC FESTIVAL



📷 BUPLYEONG PUNG MUL FESTIVAL



📷 INK(INCHEON K-POP) CONCERT



TRAVEL INFORMATION



+ Korea Travel Hotline ☎ 1330

- Tourism information and interpretation services, complain report and filing
- Service available language & Operation hours
 - Korean, English, Japanese, Chinese, Russian: 24/7 and 365 days a year
 - Vietnamese, Thai: 08:00-19:00, Open year-round

• Domestic call ☎ 1330, Overseas call ☎ +82-2-1330

+ Important Phone Numbers for Safe Travels in Incheon

- 24hr. Free Phone Interpretation Service (bbb Korea) ☎ 1588-5644
- Tourist Complaint Center ☎ 1588-8692
- Medical Emergency Service ☎ 119, Police ☎ 112, 120Michuhol Call Center ☎ 032-120

Tourist Information Center

Name of Center	Telephone	Address	Operating hours
Incheon Tourist Information Center	032-832-3031	234, Incheon Tower-daero, Yeonsu-gu (Next to the Incheon Metropolitan City Museum, Songdo-dong)	09:00-18:00 (Closed on Lunar New Year's Day & Chuseok)
Incheon International Airport Tourist Information Center (East)	032-743-0013	272, Gonghang-ro, Jung-gu (Next to Arrival Hall B, Terminal 1, Unseo-dong)	07:00-22:00 (Open year-round)
Incheon International Airport Tourist Information Center (West)	032-743-0011	272, Gonghang-ro, Jung-gu (Next to Arrival Hall E, Terminal 1, Unseo-dong)	
Incheon International Airport Tourist Information Center (Terminal 2, West)	032-743-0030	446, Je2terminal-daero, Jung-gu (Across from Gate 3, 1F, Unseo-dong)	
Wolmido Island Tourist Information Center	032-765-4169	36, Wolmimunhwa-ro, Jung-gu (Bukseong 1-ga, on the Wolmi Culture Street)	
Incheon Station Tourist Information Center	032-777-1330	271, Jemullyang-ro, Jung-gu (Inside Incheon Station, Bukseong-dong)	
Incheon Bus Terminal Tourist Information Center	032-435-7257	35, Yeonnam-ro, Nam-gu (1F, Incheon Bus Terminal, Gwangyo-dong)	09:00-18:00 (Closed on Lunar New Year's Day & Chuseok)
Ganghwa Manisan Mountain Tourist Information Center	032-934-5565	398-1, Sangbang-ri, Hwado-myeon, Ganghwa-gun (In the parking lot, Manisan Mountain)	
Gyeongin Ara Waterway Jeongseojin Tourist Information Center	032-561-1339	41, Jeongseojin 1-ro, Seo-gu (Oryu-dong) (In front of Gyeongin Ara Waterway Information Center)	
Sorae Port Tourist Information Center	032-431-2213	1605, Aam-daero, Namdong-gu (Next to Sorae History Museum)	
Incheon Port Tourist Information Center	Scheduled to open in 2024	300-3, Songdo-dong, Yeonsu-gu (2F Incheon Port International Passenger Terminal)	Scheduled to open in 2024

※ Information of Tourist Information Center is based on the publication date of guidebook and it is subject to change.

Incheon Tourist Map at a Glance

Parks & Nature

- 1 Geojampo Port [B1] 27
- 2 Gyeongin Ara Waterway [A3] 28
- 3 Gyeongyongsan Mountain [A3] 62
- 4 Gogu Reservoir [A1] 39
- 5 Gyodong Manghyangdae [A1] 39
- 6 Muuido Natural Forest [C1] 27
- 7 Neulsolgil Park [C3] 45
- 8 Dongmak Beach [B2] 35
- 9 Dumujin [B1] 54
- 10 Dream Park Wildflower Complex [A3] 31
- 11 Manisan Mountain [B2] 35
- 12 Muuidobada Nuri Trail [C2] 27
- 13 Minmeoru Beach [A1] 40
- 14 Baegunsan Mountain-Yonggungsa Temple [B2] 26
- 15 Limestone Islet [B1] 57
- 16 Sagot Beach [B1] 55
- 17 Seopungbaji Cliff [B1] 56
- 18 Seokmodo Island Arboretum [A1] 41
- 19 Seokmodo Natural Forest [A1] 40
- 20 Sorae Ecology Park [C3] 45
- 21 Solchan Park [C2] 20
- 22 Songdo Moonlight Festival Park [C2] 21
- 23 Songdo Central Park [C2] 19
- 24 Suhyangwon [A3] 30
- 25 Sicheon Park [A3] 30
- 26 Ara Maru-Ara Falls [A3] 29
- 27 Yeonan Pier [B2] 16
- 28 Yeongjong Seaside Park (rail bike) [B2] 25
- 29 Okjukdong Coastal Dune [B1] 57
- 30 Wangsan Beach [B1] 24
- 31 Wonjeoksan Park [B3] 42
- 32 Wolmi Park [B2] 15
- 33 Wolmido Lighthouse Road [B2] 15
- 34 Wolmisan Mountain [B2] 16
- 35 Eurwangni Beach [B1] 24

- 36 Incheon Butterfly Park [B3] 42
- 37 Incheon Grand Park [B3] 44
- 38 Incheon Songdo International Campsite [C3] 21
- 39 Jayu Park [B2] 07
- 40 Janghwa-ri Sunset Viewing Point [B1] 36
- 41 Jeongseojin [A2] 29
- 42 Cheongna Lake Park [A2] 31
- 43 East Asian Seepweed Habitat [A1] 41
- 44 Canalway Waterside Park [B3] 30
- 45 Kongdol Beach [B1] 54
- 46 Haneul Garden [B2] 25

Museums & Exhibitions

- 47 Ganghwa Peace Observatory [A2] 33
- 48 Geomdan Prehistory Museum [A3] 64
- 49 Gyodong Swallow Nest (Welcome Center) [A1] 38
- 50 National Institute of Biological Resources [A2] 30
- 51 Daebul Hotel Jung-gu Life History Exhibition [B2] 06
- 52 Baedari Match Village Museum [B2] 46
- 53 Bupyeong Gulpo-nuri Climate Change Experience [B3] 63
- 54 Bupyeong History Museum [B3] 43
- 55 Sorae History Museum [C3] 45
- 56 Sound Experience Museum [B2] 36
- 57 Sochang Experience Center [A2] 37
- 58 Songdo ConvensiA [C3] 20
- 59 Songam Art Museum [C3] 67
- 60 Sudoguksan Museum of Housing & Living [B2] 47
- 61 National Security Training Center [C1] 58
- 62 Oktoki Space Center [A2] 36
- 63 Wolmi Park Observatory [B2] 16
- 64 Euseondang Shrine [B2] 12
- 65 Incheon Open Port Museum [B2] 05
- 66 Incheon Open Port Modern Architecture Exhibition Center [B2] 05
- 67 Incheon Airport Terminal 2 Observatory Deck [B1] 27
- 68 Incheon Bridge Memorial [B2] 23
- 69 Incheon Urban History Museum [C2] 19

- 70 Memorial Hall for Incheon Landing Operation [C3] 67
- 71 Incheon Metropolitan City Museum [C3] 67
- 72 Incheon Art Platform [B2] 05
- 73 Incheon Children Science Museum [A3] 62
- 74 Incheon Overseas Chinese History and Cultural Center [B2] 12
- 75 Corbina Museum [C1] 58
- 76 Jajangmyeon Museum [B2] 12
- 77 Tri-bowl [C2] 19
- 78 The Museum of Korea Emigration History [B2] 16
- 79 Korean-Chinese Cultural Center (Incheon Overseas Chinese History Hall) [B2] 11
- 80 Hwamunseok Culture Hall [A2] 33
- 81 G-Tower Observatory (IFEZ PR Center) [C2] 19

Leisure & Sports

- 81 Ganghwa Leports Park (Tianlim) [A2] 36
- 82 Ganghwa Seaside Resort Luge [B2] 36
- 83 Seokmodo Mineral Hot Spring [A1] 40
- 84 Seonhak International Ice Rink [C3] 63
- 85 Amusement Media Space TAM [B2] 65
- 86 Cinespace Juan [B3] 65
- 87 Wolmido Cruise & Car Ferry [B2] 16
- 88 Wolmi Culture Street-Wolmi Theme Park [B2] 15
- 89 Wolmi Sea Train [B2] 75
- 90 Incheon Asiad Main Stadium [A3] 64
- 91 Incheon Football Stadium [B3] 65
- 92 Incheon Port Passenger Terminal [B2] 17
- 93 Inspire Entertainment Resort [B1] 23
- 94 Paradise City [B2] 23
- 95 BMW Driving Center [B2] 23

Life & Culture

- 96 Gyodong Studio [A1] 38
- 97 Gueupbaetteo Quay [B2] 26
- 98 Nanjeong Reservoir Sunflower Village Garden [A1] 39
- 99 Noodle Platform [B2] 08
- 100 Deorimi Museum of Art [A2] 37

- 101 Baedari Art Stay 1930 [B2] 47
- 102 Baedari Secondhand Bookstore Street [B2] 46
- 103 Silo Mural [B2] 17
- 104 Songwol-dong Donghwa Village [B2] 11
- 105 Sungui Wood Craft Center [B3] 66
- 106 Art Center Incheon [C2] 20
- 107 Joyang Bangjick (Sinmun-ri Art Museum) [A2] 37
- 108 Camp Market [B3] 43
- 109 Trickart Story [B2] 11
- 110 Haeden Museum of Art [B2] 37

Islands

- 111 Gyodongdo Island [A1] 38
- 112 Gulpudo Island [C1] 51
- 113 Daeijakdo Island [C1] 52
- 114 Daechongdo Island [B1] 56
- 115 Deokjeokdo Island [C1] 51
- 116 Muuido Island [C1] 27
- 117 Baengnyeongdo Island [B1] 54
- 118 Boleumdo Island [A1] 36
- 119 Sammok Quay [B2] 49
- 120 Seonjaedo Island [C1] 60
- 121 Seokmodo Island [A1] 40
- 122 Socheongdo Island [B1] 56
- 123 Seungbongdo Island [C1] 53
- 124 Sindo-Sido-Modo Islands [B1] 50
- 125 Yeonpyeongdo Island [B1] 58
- 126 Yeongheungdo Island [C1] 60
- 127 Jawoldo Island [C1] 53
- 128 Jangbongdo Island [B1] 50
- 129 Jumundo Island [A1] 36

Shopping

- 130 Ganghwa Market [A2] 34
- 131 Guwol-dong Rodeo Street [C3] 45
- 132 Daeryong Market [A1] 38

How to Use Index

Name of Tourist Sites	Page
1 Geojampo Port [B1]	27
No. of Map	Coordinate

- 133 Dong-gu Food Streets [B2] 47
- 134 Moraena Market [B3] 64
- 135 Bupyeong Modoo Mall (Bupyeong Underground Shopping Arcade) [B3] 43
- 136 Bupyeong Culture Street [B3] 42
- 137 Bupyeong Seafood Stew Street [B3] 43
- 138 West Sea 5 Islands Marine Product Culture Complex [A3] 31
- 139 Sorae Port & Sorae Fish Market [C3] 44
- 140 Sinpo International Market [B2] 66
- 141 Incheon Fish Market [B2] 16
- 142 Triple Street [C3] 19
- 143 Pyeongnidan-gil [B3] 42
- 144 Hyundai Premium Outlet [C3] 19

History

- 145 Dolmen in Bugeun-ri [A2] 33
- 146 Gwangseongbo Fortress [A2] 34
- 147 Dapdong Cathedral of St. Paul [B2] 08
- 148 Ganghwa Anglican Church [A2] 34
- 149 Deokjinjin Fortress [A2] 34
- 150 Bomunsa Temple [A1] 41
- 151 Three Kingdoms Mural Street (Chohanji Mural Street) [B2] 12
- 152 Sorae Railway Bridge [C3] 45
- 153 Yeonmijeong [A2] 34
- 154 Woninjae [C3] 63
- 155 Incheon Dohobu Government Office [C3] 46
- 156 Incheon Citizen Love House [B2] 08
- 157 Incheon Hyanggyo Confucian School [C3] 46
- 158 Jeondeungsa Temple [A2] 35
- 159 Jemulpo Club [B2] 06
- 160 Qing and Japanese Concession Area Boundary Stairs [B2] 06
- 161 Chojijin Fortress [A2] 44
- 162 Pai-lou [B2] 11
- 163 Hongyemun Gate [B2] 07

